

3.0 Conservation Planning Process/ Description And Area Plan Criteria of the MSHCP Conservation Area



3.2 DESCRIPTION OF THE MSHCP CONSERVATION AREA

3.2.1 The MSHCP Plan Map

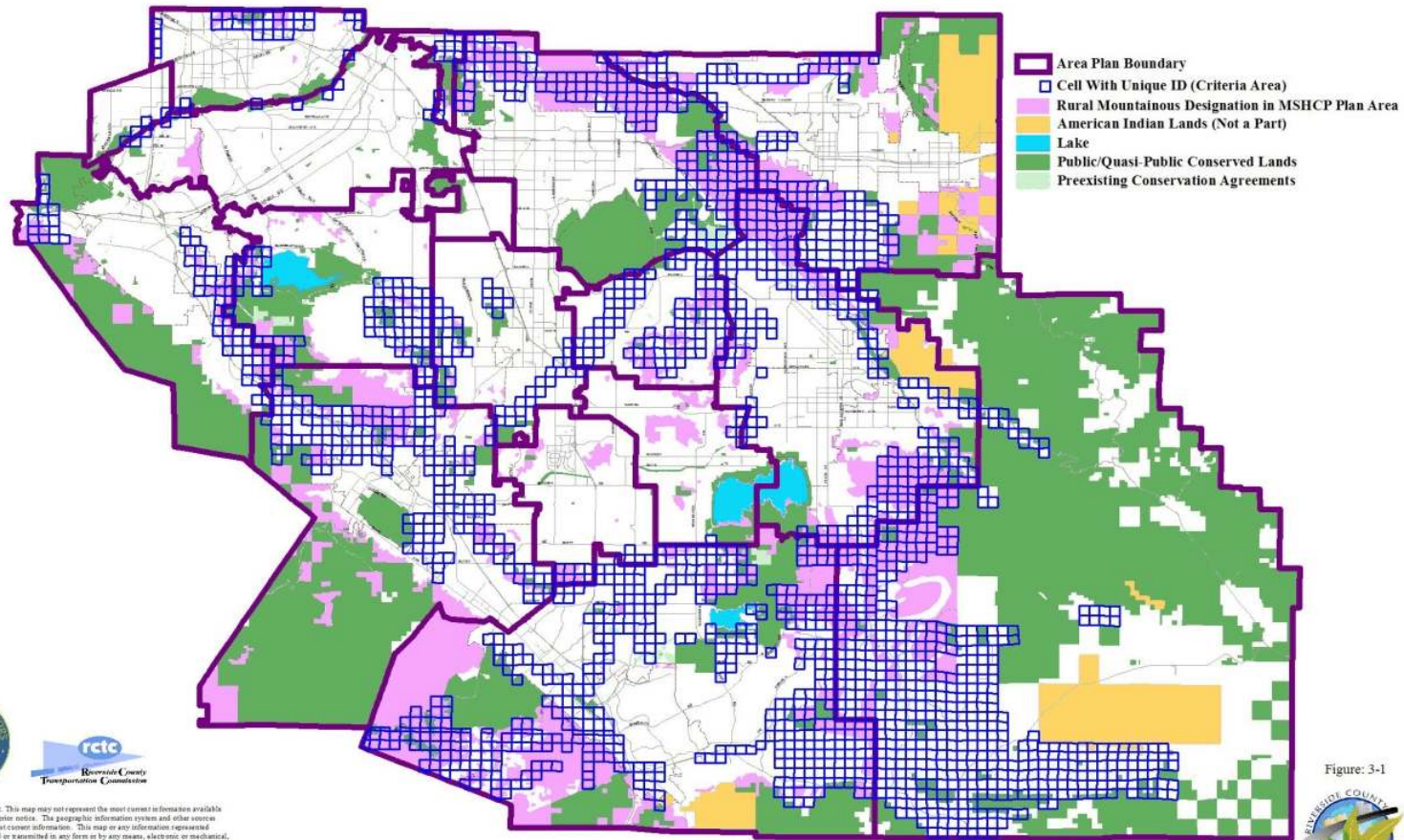
Figure 3-1 depicts the Criteria Area within the Plan Area and represents the MSHCP Plan map. Four categories are depicted on the legend for the Plan map and are described below.

Criteria Area: This represents the area within which MSHCP Criteria will be applied and from which 153,000 acres of new Conservation will be achieved to contribute toward assembly of the overall MSHCP Conservation Area. Criteria have been developed for individual Cells or Cell Groupings and are presented for each Area Plan in *Section 3.3*.

Public/Quasi-Public Lands: Under this category, existing known Public/Quasi-Public Lands (PQP) that will form the initial backbone of the MSHCP Conservation Area are depicted. Approximately 347,000 acres of Conservation are anticipated on these lands.

Within five years of Permit issuance, the RCA shall verify the precise acreage, location and amount of PQP Lands in the MSHCP Conservation Area. Such information shall be submitted to the Wildlife Agencies for review. In the event that a Permittee elects to use property currently depicted as PQP Lands on the MSHCP Plan map (*Figure 3-1*) for a different purpose than for contribution to the 347,000 acres of PQP Lands anticipated for Conservation in the MSHCP, the Permittee shall locate and acquire or otherwise encumber replacement acreage at a minimum ratio of 1:1. The Permittee must make findings that the replacement acreage is biologically equivalent or superior to the existing property as set forth in *Section 6.5* of the *MSHCP, Volume I*.

3.0 Reserve Planning Process/Description and Area Plan Criteria of the MSCHP Conservation Area



MSHCP Plan Map

Figure: 3-1



3-17



This map is a draft document. This map may not represent the most current information available and may be revised without prior notice. The geographic information system and other sources should be queried for the most current information. This map or any information represented on it, shall not be reproduced or transmitted in any form or by any means, electronic or mechanical, including photo copying and recording.



File: D:\mschp\mshcp\map\mschp.mxd

3.0 Conservation Planning Process/ Description And Area Plan Criteria of the MSHCP Conservation Area



Rural Mountainous Designation:

This category represents the Rural/Mountainous land use designation incorporated in the County General Plan. In general these lands are characterized by steep slopes that represent constraints to Development. For example, of the approximately 54,900 acres depicted on the MSCHP Plan map outside the Criteria Area but within the Rural Mountainous designation, approximately 42,500 acres (77 percent) are characterized by slopes with gradients greater than 30 percent. While Reserve Assembly activities are not expected to occur in Rural Mountainous designation areas outside the Criteria Area, existing and future land use practices in these areas may provide an edge for the MSHCP Conservation Area that would minimize Edge Effects when compared with more urban land uses.

American Indian Lands:

American Indian Lands are depicted on the MSHCP Plan map for reference purposes. No Conservation is assumed on these lands and no activities on these lands would be permitted under the MSHCP. The American Indian Lands are not a part of the MSHCP.

The MSHCP Conservation Area will be comprised of Conservation on existing Public/Quasi-Public Lands and new Conservation on approximately 153,000 acres of land within the Criteria Area. While the precise configuration for new Conservation within the Criteria Area has not been defined or mapped, a Conceptual Reserve Design was developed for analysis purposes as described in *Sections 3.1.9 and 3.3.1* of this document. While certainly not the only possible configuration to emerge from application of Criteria within the Criteria Area, the Conceptual Reserve Design was a useful tool in establishing conservation targets as part of the MSHCP planning process. The conservation targets developed as part of that process, along with anticipated Conservation on Public/Quasi-Public Lands, form the basis for the description of the MSHCP Conservation Area presented in this section. Achievement of the conservation targets as part of the overall Reserve Assembly process will be an important measuring and monitoring tool for the MSHCP.

3.2.2 The MSHCP Conservation Area

In addition to the features incorporated in the MSHCP Plan map, as described above, the MSHCP Conservation Area may be described in terms of several specific analysis factors considered during the conservation planning process. These include Bioregions, vegetation, soils, patch size, and edge