

3.0 Conservation Planning Process/ Description and Area Plan Criteria of the MSHCP Conservation Area



3.3.5 Highgrove Area Plan

This section identifies target acreages, applicable cores and linkages, Area Plan Subunits and Criteria for the Highgrove Area Plan. For a summary of the methodology and map resources used to develop the target acreages and Criteria for the MSHCP Conservation Area, including this Area Plan, see *Section 3.3.1*.

➤ Target Acreages

The target conservation acreage range for the Highgrove Area Plan is 1,450 – 1,780 acres; it is composed of approximately 1,105 acres of existing Public/Quasi-Public Lands and 345 – 675 acres of Additional Reserve Lands.

➤ Applicable Cores and Linkages

The MSHCP Conservation Area comprises a variety of existing and proposed Cores, Linkages, Constrained Linkages and Noncontiguous Habitat Blocks (referred to here as “cores and linkages”). The cores and linkages listed below are within the Highgrove Area Plan. For descriptions of these cores and linkages and more information about the biologically meaningful elements of the MSHCP Conservation Area within the Highgrove Area Plan, see *Section 3.2.3* and *MSHCP Volume II, Section A*.

CORES AND LINKAGES WITHIN THE HIGHGROVE AREA PLAN

- Contains a small portion of Proposed Constrained Linkage 7
- Contains a small portion of Proposed Linkage 4
- Contains a small portion of Existing Noncontiguous Habitat Block A

Descriptions of Planning Species, Biological Issues and Considerations and Criteria for each Area Plan Subunit within the Highgrove Area Plan are presented later in this section. These descriptions, combined with the descriptions of the cores and linkages referred to above, provide information about biological issues to be considered in conjunction with Reserve Assembly within the Highgrove Area Plan. As noted in *Section 3.1*, the Area Plan boundaries established as part of the Riverside County General Plan were selected to provide an organizational framework for the Area Plan

3.0 Conservation Planning Process/ Description and Area Plan Criteria of the MSHCP Conservation Area



Subunits and Criteria. While these boundaries are not biologically based, unlike the cores and linkages, they relate specifically to General Plan boundaries and the jurisdictional boundaries of incorporated Cities and were selected to facilitate implementation of the MSHCP in the context of existing institutional and planning boundaries.

► Area Plan Subunits

The Highgrove Area Plan is divided into two Subunits. For each Subunit, target conservation acreages are established along with a description of the Planning Species, Biological Issues and Considerations, and Criteria for each Subunit. For more information regarding specific conservation objectives for the Planning Species, see *Section 9.0*. Subunit boundaries are depicted on the Cells and Cell Groupings map displays (*Figures 3-10 and 3-11*). *Table 3-6* presents the Criteria for the Highgrove Area Plan.

Subunit 1: Sycamore Canyon/Box Springs - Central

Target acreage range for Additional Reserve Lands within Subunit: 95-180 acres

Cells within this Subunit: 545, 635 and 721

Planning Species:

- Bell's sage sparrow
- cactus wren
- bobcat

Biological Issues and Considerations:

- Provide a contiguous linkage incorporating upland and wetland habitats, connecting the Box Springs Reserve with the Sycamore Canyon Reserve.
- Maintain linkage habitat for bobcat.

3.0 Conservation Planning Process/ Description and Area Plan Criteria of the MSHCP Conservation Area



Subunit 2: Springbrook Wash - North

Target acreage range for Additional Reserve Lands within Subunit: 250-495 acres

Cells within this Subunit: 97, 101, 146, 147, 148, 196 and 197

Planning Species:

- coastal California gnatcatcher
- bobcat
- mountain lion

Biological Issues and Considerations:

- Maintain a contiguous linkage through Springbrook Wash from Box Springs Reserve to the Santa Ana River.
- Maintain habitat connectivity within the Springbrook Wash to facilitate conservation and distribution of wetland species.
- Conserve large blocks of interconnected coastal sage scrub habitat in order to connect coastal California gnatcatcher populations within Riverside County with those located at Blue Mountain in San Bernardino County.
- Maintain large blocks of interconnected habitat including grassland and coastal sage scrub for raptor foraging habitat.
- Maintain connection with Badlands to east for bobcat and mountain lion.

3.0 Conservation Planning Process/Description and Area Plan

Criteria of the MSHCP Conservation Area



TABLE 3-6. CRITERIA FOR HIGHGROVE AREA PLAN

SUB UNIT	CELL GROUP	QUADRAT NUMBER	USGS SECTION	QUARTER SECTION	CRITERIA
SUBUNIT 1 - Sycamore Canyon/Box Springs Central					
1		545	28	NW	Conservation within this Cell will contribute to assembly of Proposed Constrained Linkage 7. Conservation within this Cell will focus on coastal sage scrub habitat. Areas conserved within this Cell will be connected to coastal sage scrub habitat proposed for conservation to the south in Cell #635. Conservation within this Cell will range from 15%-25% of the southeastern portion of the Cell.
1		635	28	SW	Conservation within this Cell will contribute to assembly of Proposed Constrained Linkage 7. Conservation within this Cell will focus on coastal sage scrub habitat. Areas conserved within this Cell will be connected to coastal sage scrub habitat proposed for conservation to the south in Cell #721 and to the north in Cell #545. Conservation within this Cell will range from 25%-35% of the central portion of the Cell.
1		721	33	NW	Conservation within this Cell will contribute to assembly of Proposed Constrained Linkage 7. Conservation within this Cell will focus on coastal sage scrub habitat and riparian scrub, woodlands and forests. Areas conserved within this Cell will be connected to coastal sage scrub habitat proposed for conservation to the north in Cell #635 and to the west in Cell #719 in the City of Riverside. Conservation within this Cell will range from 35%-45% of the northeastern and central portions of the Cell.
SUBUNIT 2 - Springbrook Wash North					
2		97	09	NE	Conservation within this Cell will contribute to assembly of Proposed Linkage 4. Conservation within this Cell will focus on assembly of coastal sage scrub habitat. Areas conserved within this Cell will be connected to coastal sage scrub habitat proposed for conservation to the east in Cell #101. Conservation within this Cell will range from 40%-50% of the northern portion of the Cell.
2		101	10	NW	Conservation within this Cell will contribute to assembly of Proposed Linkage 4. Conservation within this Cell will focus on coastal sage scrub and annual grasslands habitats. Areas conserved within this Cell will be connected to coastal sage scrub habitat proposed for conservation to the west in Cell #97 and to the east in Cell Group F of the Reche Canyon/Badlands Area Plan, and to annual grasslands proposed for conservation to the south in Cell #148.
2		146	09	SW	Conservation within this Cell will range from 65%-75% of the northern and eastern portions of the Cell. Conservation within this Cell will contribute to assembly of Existing Noncontiguous Habitat Block A. Conservation within this Cell will focus on coastal sage scrub habitat. Areas conserved within this Cell will be connected to coastal sage scrub habitat and annual grasslands proposed for conservation to the south in Cell #196 and to annual grasslands proposed for conservation to the east in Cell #147. Conservation within this Cell will range from 5%-15% of the southern portion of the Cell.

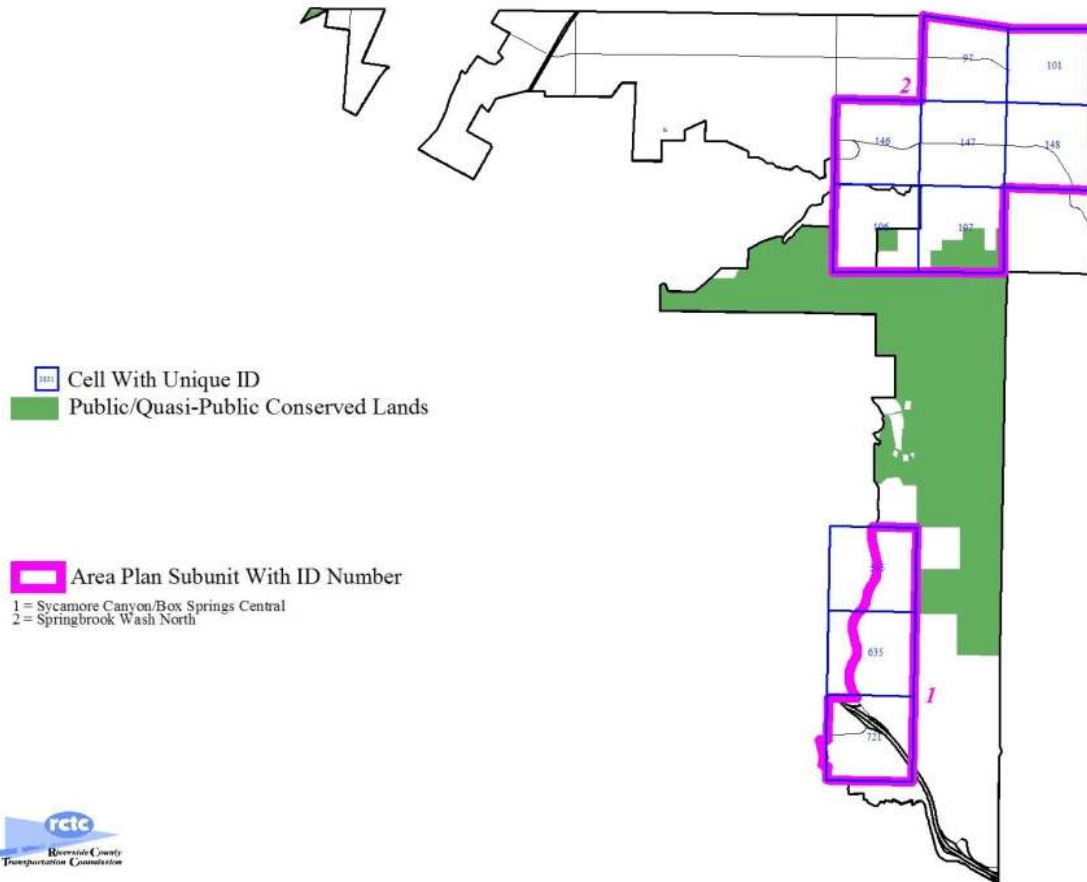
3.0 Conservation Planning Process/Description and Area Plan Criteria of the MSHCP Conservation Area



TABLE 3-6. CRITERIA FOR HIGHGROVE AREA PLAN

SUB UNIT	CELL GROUP	QUADRAT NUMBER	USGS SECTION	QUARTER SECTION	CRITERIA
2		147	09	SE	Conservation within this Cell will contribute to assembly of Existing Noncontiguous Habitat Block A. Conservation within this Cell will focus on annual grassland, woodlands and forests habitats. Areas conserved within this Cell will be connected to annual grasslands proposed for conservation to the west in Cell #146 and to annual grasslands, woodlands and forests proposed for conservation to the south in Cell #197. Conservation within this Cell will be approximately 5% of the southwestern portion of the Cell.
2		148	10	SW	Conservation within this Cell will contribute to assembly of Proposed Linkage 4. Conservation within this Cell will focus on annual grasslands habitat. Areas conserved within this Cell will be connected to coastal sage scrub habitat and annual grasslands proposed for conservation to the north in Cell #101 and to Cell Group E in the Reche Canyon/Badlands Area Plan. Conservation within this Cell will range from 5%-15% of the northeastern portion of the Cell.
2		196	16	NW	Conservation within this Cell will contribute to assembly of Existing Noncontiguous Habitat Block A. Conservation within this Cell will focus on coastal sage scrub habitat and annual grasslands. Areas conserved within this Cell will be connected to conserved coastal sage scrub habitat occurring on Box Springs Reserve to the south and to annual grasslands and coastal sage scrub proposed for conservation to the east in Cell #197. Conservation within this Cell will range from 50%-60% of the eastern portion of the Cell.
2		197	16	NE	Conservation within this Cell will contribute to assembly of Existing Noncontiguous Habitat Block A. Conservation within this Cell will focus on coastal sage scrub, annual grasslands, woodlands and forests habitats. Areas conserved within this Cell will be connected to conserved coastal sage scrub habitat occurring on Box Springs Reserve to the south, to annual grasslands and coastal sage scrub proposed for conservation to the west in Cell #196 and to annual grasslands proposed for conservation to the north in Cell #147. Conservation within this Cell will range from 45%-55% of the western portion of the Cell.

3.0 Conservation Planning Process/Description and Area Plan Criteria of the MSHCP Conservation Area



This map is a draft document. This map may not represent the most current information available and may be revised without prior notice. The geographic information system and other sources should be queried for the most current information. This map or any information represented on it, shall not be reproduced or transmitted in any form or by any means, electronic or mechanical, including photo copying and recording.



Highgrove Area Plan With Cells, Cell Groups & Subunits Keyed to MSHCP Criteria

Figure: 3-10



3-171

3.0 Conservation Planning Process/Description and Area Plan Criteria of the MSHCP Conservation Area

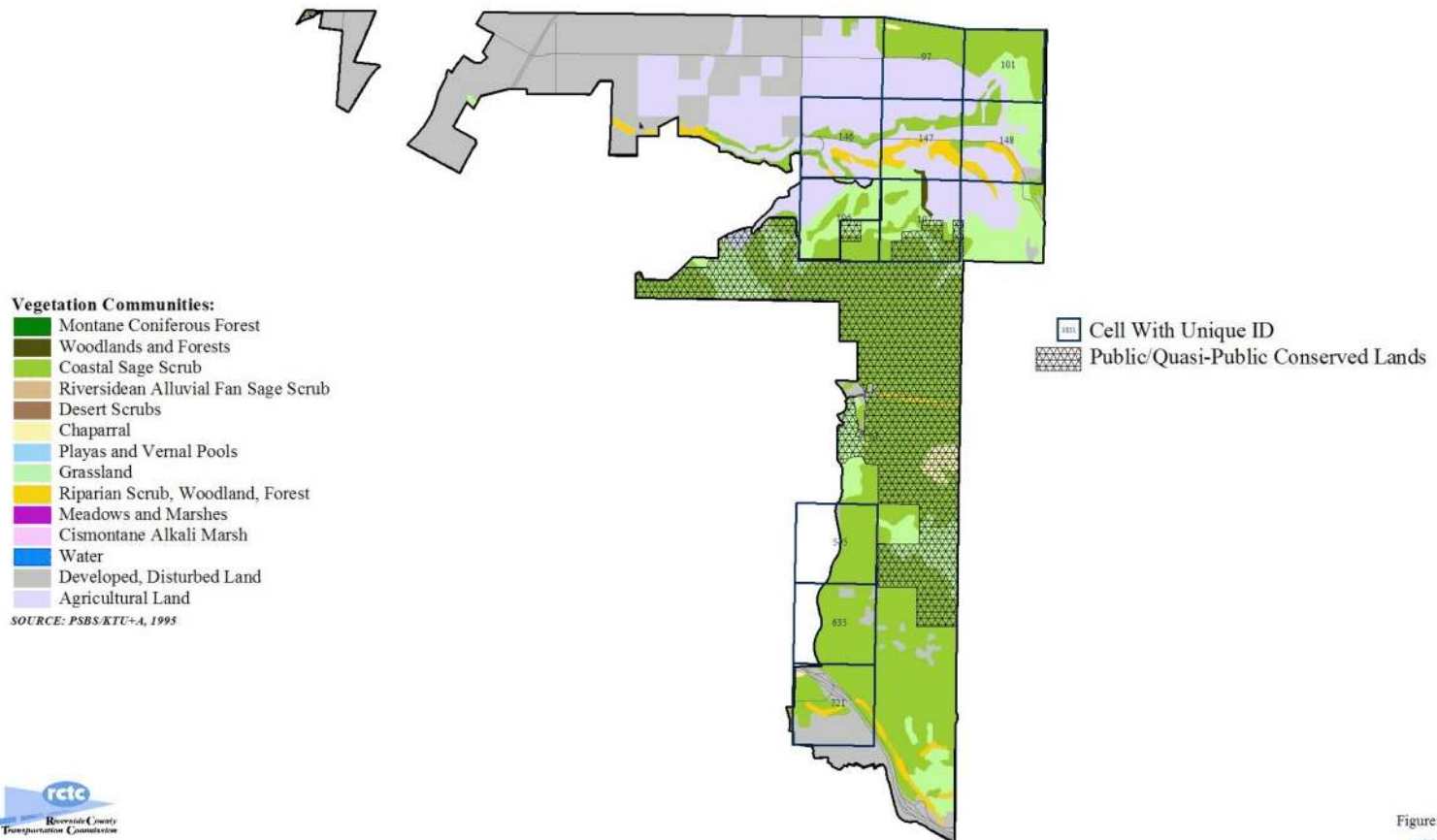


Figure: 3-11



This map is a draft document. This map may not represent the most current information available and may be revised without prior notice. The geographic information systems and other sources should be queried for the most current information. This map or any information represented on it, shall not be reproduced or transmitted in any form or by any means, electronic or mechanical, including photo copying and recording.



3-172

Highgrove Area Plan With Vegetation, Cells and Cell Groups Keyed to MSHCP Criteria

