

3.0 Conservation Planning Process

Description and Area Plan Criteria of the MSHCP Conservation Area



3.3.14 Sun City/Menifee Area Plan

This section identifies target acreages, applicable cores and linkages, Area Plan Subunits and Criteria for the Sun City/Menifee Area Plan. For a summary of the methodology and map resources used to develop the target acreages and Criteria for the MSHCP Conservation Area, including this Area Plan, see *Section 3.3.1*.

Target Acreages

The target conservation acreage range for the Sun City/Menifee Area Plan is 1,545 – 2,010 acres; it is composed of approximately 425 acres of existing Public/Quasi-Public Lands and 1,120 – 1,585 acres of Additional Reserve Lands.

Applicable Cores and Linkages

The MSHCP Conservation Area comprises a variety of existing and proposed Cores, Linkages, Constrained Linkages and Noncontiguous Habitat Blocks (referred to here generally as “cores and linkages”). The cores and linkages listed below are within the Sun City/Menifee Area Plan. For descriptions of these cores and linkages and more information about the biologically meaningful elements of the MSHCP Conservation Area within the Sun City/Menifee Area Plan, see *Section 3.2.3 and MSHCP Volume II, Section A*.

CORES AND LINKAGES WITHIN THE SUN CITY/MENIFEE AREA PLAN

- ! Contains a small portion of Proposed Core 2
- ! Contains a small portion of Proposed Constrained Linkage 16
- ! Contains a small portion of Proposed Constrained Linkage 17
- ! Contains a small portion of Proposed Linkage 8

Descriptions of Planning Species, Biological Issues and Considerations and Criteria for each Area Plan Subunit within the Sun City/Menifee Area Plan are presented later in this section. These descriptions,

3.0 Conservation Planning Process

Description and Area Plan Criteria of the MSHCP Conservation Area



combined with the descriptions of the cores and linkages referred to above, provide information about biological issues to be considered in conjunction with Reserve Assembly within the Sun City/Menifee Area Plan. As noted in *Section 3.1*, the Area Plan boundaries established as part of the Riverside County General Plan were selected to provide an organizational framework for the Area Plan Subunits and Criteria. While these boundaries are not biologically based, unlike the cores and linkages, they relate specifically to General Plan boundaries and the jurisdictional boundaries of incorporated Cities and were selected to facilitate implementation of the MSHCP in the context of existing institutional and planning boundaries.

Area Plan Subunits

The Sun City/Menifee Area Plan is divided into two Subunits. For each Subunit, target conservation acreages are established along with a description of the Planning Species, Biological Issues and Considerations, and Criteria for each Subunit. For more information regarding specific conservation objectives for the Planning Species, see *Section 9.0*. Subunit boundaries are depicted on the Cells and Cell Groupings map displays (*Figures 3-28 and 3-29*). *Table 3-15* presents the Criteria for the Sun City/Menifee Area Plan.

Subunit 1: Warm Springs Creek/French Valley Area

Target acreage range for Additional Reserve Lands within Subunit: 395-565 acres

Cell Groups within this Subunit: A and B

Planning Species:

- ! Bell's sage sparrow
- ! burrowing owl
- ! coastal California gnatcatcher
- ! grasshopper sparrow
- ! Southern California rufous-crowned sparrow
- ! Quino checkerspot butterfly
- ! bobcat

3.0 Conservation Planning Process

Description and Area Plan Criteria of the MSHCP Conservation Area



- ! long-spined spine flower
- ! Munz's onion
- ! Palmer's grapplinghook

Biological Issues and Considerations:

- ! Conserve upland habitat contributing to linkage connecting new core area in Antelope Valley to Diamond Valley Lake.
- ! Maintain northern portion of core habitat for bobcat south of Scott Road.
- ! Maintain portion of core habitat area for Quino checkerspot butterfly.
- ! Conserve clay soils supporting long-spined spine flower, Munz's onion and Palmer's grapplinghook.

Subunit 2: Lower Sedco Hills

Target acreage range for Additional Reserve Lands within Subunit: 725-1,020 acres

Cell Groups within this Subunit: C

Planning Species:

- ! Bell's sage sparrow
- ! coastal California gnatcatcher
- ! grasshopper sparrow
- ! Southern California rufous-crowned sparrow
- ! Quino checkerspot butterfly

Biological Issues and Considerations:

- ! Contribute to lower Sedco Hills portion of a habitat connection between the new core area in Antelope Valley and the Estelle Mountain/Lake Mathews Reserve area.
- ! Conserve existing populations and habitat of the coastal California gnatcatcher.
- ! Maintain wetlands for purposes of connection and wildlife dispersal as well as wetland species conservation.
- ! Maintain core and linkage habitat for Quino checkerspot butterfly.

3.0 Conservation Planning Process/Description and Area Plan



Criteria of the MSHCP Conservation Area

TABLE 3-15. CRITERIA FOR SUN CITY/MENIFEE AREA PLAN

SUB UNIT	CELL GROU	QUADRA T	USGS SECTIO	QUARTE R	CRITERIA
SUBUNIT 1 - Warm Springs Creek/French Valley Area					
1	A	5066	24	NE	<p>Conservation within this Cell Group will contribute to assembly of Proposed Linkage 8. Conservation within this Cell Group will focus on grassland and coastal sage scrub. Areas conserved within this Cell Group will be connected to uplands proposed for conservation in Cell Group B to the east, and to upland habitat proposed for conservation in Cell Group X to the south in the Southwest Area Plan. Conservation within this Cell Group will range from 50%-60% focusing on the southern and central portions of the Cell Group.</p> <p>Conservation within this Cell Group will contribute to assembly of Proposed Constrained Linkage 17. Conservation within this Cell Group will focus on grassland and coastal sage scrub. Areas conserved within this Cell Group will be connected to grassland habitat proposed for conservation in Cell Group A to the west, to agricultural land proposed for conservation to the east in Cell #5174 in the Southwest Area Plan, and to uplands proposed for conservation in Cell Group X to the south in the Southwest Area Plan. Conservation within this Cell Group will range from 60%-70% focusing on the western and the northeastern portions of the Cell Group.</p>
1	A	5163	24	SW	
1	A	5165	24	SE	
1	B	5167	19	SW	
1	B	5168	19	SE	
SUBUNIT 2 - Lower Sedco Hills					
2	C	5252	28	NW	<p>Conservation within this Cell Group will contribute to assembly of Proposed Linkage 8 and Proposed Constrained Linkage 16. Conservation within this Cell Group will focus on chaparral, woodlands and forest, a small area of coastal sage scrub, and grassland. Areas conserved within this Cell Group will be connected to coastal sage scrub and chaparral habitat proposed for conservation to the south in Cell Groups H and I, and Cell #5460 all in the Southwest Area Plan. Conservation within this Cell Group will range from 60%-70% focusing on the southern, central and eastern portions of the Cell Group.</p>



3.0 Conservation Planning Process/Description and Area Plan

Criteria of the MSHCP Conservation Area

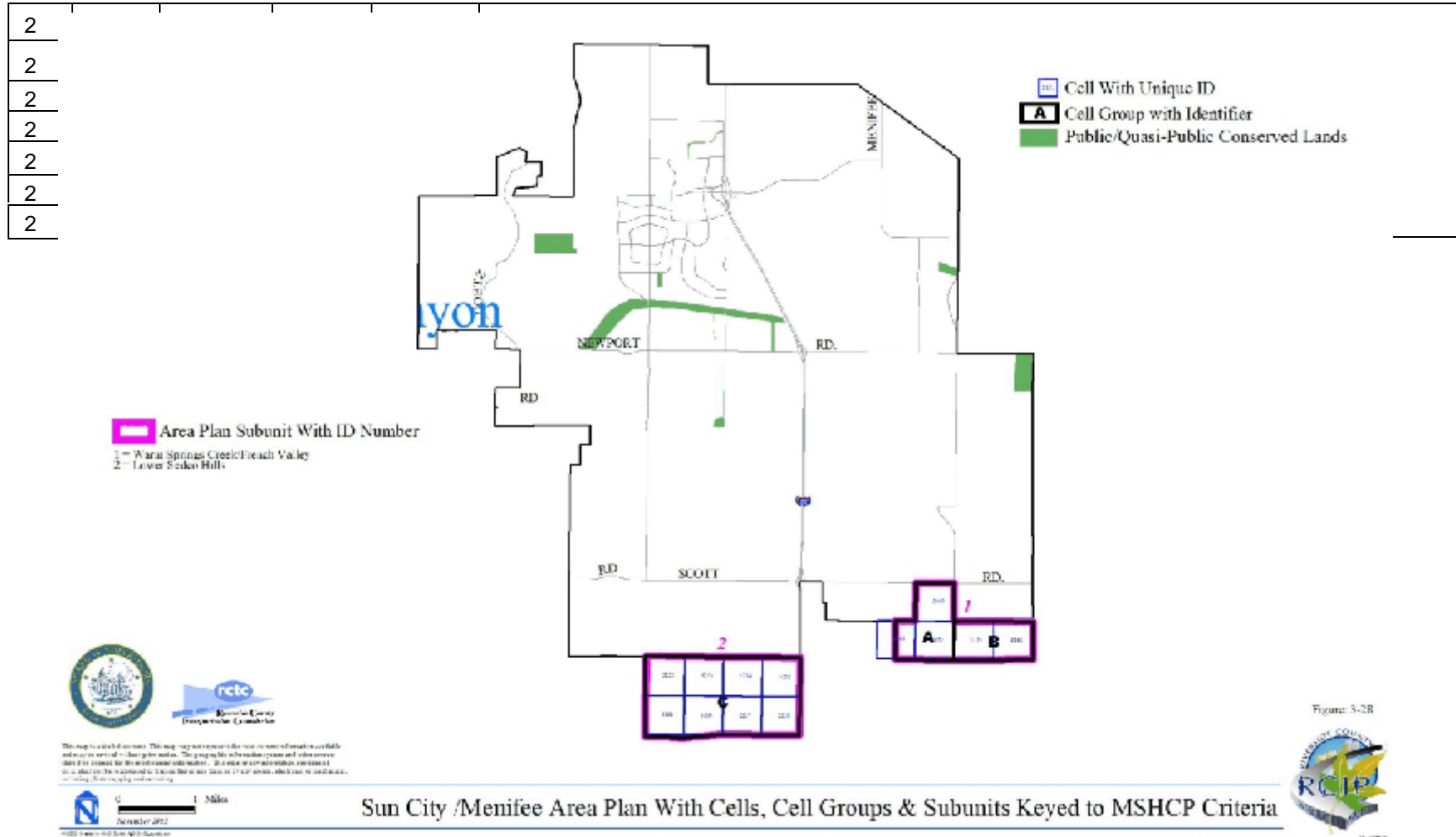


Figure 3-2B



3-370

3.0 Conservation Planning Process/Description and Area Plan

Criteria of the MSHCP Conservation Area

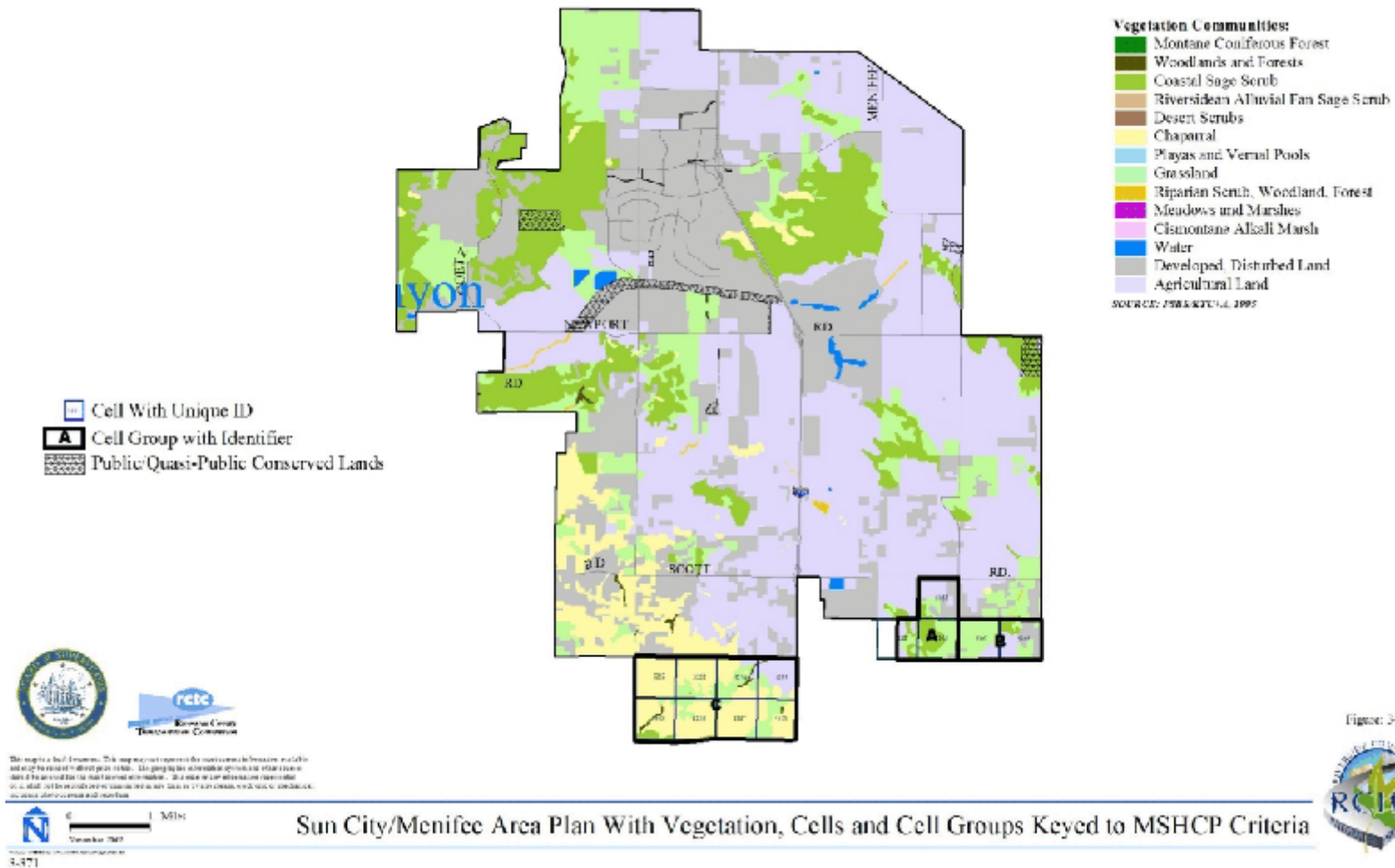


Figure 3-29

