

# 3.0 Conservation Planning Process

## Description and Area Plan Criteria of the MSHCP Conservation Area

---



### 3.3.17 Cities of Riverside/Norco

This section identifies target acreages, applicable cores and linkages, Area Plan Subunits and Criteria for the Cities of Riverside/Norco. For a summary of the methodology and map resources used to develop the target acreages and Criteria for the MSHCP Conservation Area, including this Area Plan, see *Section 3.3.1*.

#### ' Target Acreages

The target conservation acreage range for the Cities of Riverside/Norco is 3,465 – 3,615 acres; it is composed of approximately 3,375 acres of existing Public/Quasi-Public Lands and 90 – 240 acres of Additional Reserve Lands. The City of Norco and City of Riverside sit entirely within the Cities of Riverside/Norco. The target acreage range within the City of Norco is 60 – 140 acres. The target acreage range within the City of Riverside is 55 – 125 acres. The target acreages of both Cities are included within the 90 – 240 acre target conservation range on Additional Reserve Lands for the entire Cities of Riverside/Norco.

#### ' Applicable Cores and Linkages

The MSHCP Conservation Area comprises a variety of existing and proposed Cores, Linkages, Constrained Linkages and Noncontiguous Habitat Blocks (referred to here generally as “cores and linkages”). The cores and linkages listed below are within the Cities of Riverside/Norco. For descriptions of these cores and linkages and more information about the biologically meaningful elements of the MSHCP Conservation Area within the Cities of Riverside/Norco, see *Section 3.2.3 and MSHCP Volume II, Section A*.

#### CORES AND LINKAGES WITHIN THE CITIES OF RIVERSIDE/NORCO

- ! Contains a small portion of Proposed Constrained Linkage 7
- ! Contains a small portion of Existing Core A

Descriptions of Planning Species, Biological Issues and Considerations and Criteria for each Area Plan

# 3.0 Conservation Planning Process

## Description and Area Plan Criteria of the MSHCP Conservation Area

---



Subunit within the Cities of Riverside/Norco are presented later in this section. These descriptions, combined with the descriptions of the cores and linkages referred to above, provide information about biological issues to be considered in conjunction with Reserve Assembly within the Cities of Riverside/Norco. As noted in *Section 3.1*, the Area Plan boundaries established as part of the Riverside County General Plan were selected to provide an organizational framework for the Area Plan Subunits and Criteria. While these boundaries are not biologically based, unlike the cores and linkages, they relate specifically to General Plan boundaries and the jurisdictional boundaries of incorporated Cities and were selected to facilitate implementation of the MSHCP in the context of existing institutional and planning boundaries.

### Area Plan Subunits

The Cities of Riverside/Norco is divided into two Subunits. For each Subunit, target conservation acreages are established along with a description of the Planning Species, Biological Issues and Considerations, and Criteria for each Subunit. For more information regarding specific conservation objectives for the Planning Species, see *Section 9.0*. Subunit boundaries are depicted on the Cells and Cell Groupings map displays (*Figures 3-34 and 3-35*). *Table 3-18* presents the Criteria for the Cities of Riverside/Norco.

### Subunit 1: Santa Ana River - South

Target acreage range for Additional Reserve Lands within Subunit: 75-200 acres

Cells within this Subunit: 443, 534, 617, 621, 699, 700, 875, 876, 964 and 965

#### Planning Species:

- ! black-crowned night heron
- ! burrowing owl
- ! Cooper's hawk
- ! double-crested cormorant
- ! downy woodpecker
- ! least Bell's vireo
- ! loggerhead shrike

### **3.0 Conservation Planning Process**

#### **Description and Area Plan Criteria of the MSHCP Conservation Area**

---



- ! osprey
- ! peregrine falcon
- ! southwestern willow flycatcher
- ! tree swallow
- ! western yellow-billed cuckoo
- ! white-faced ibis
- ! white-tailed kite
- ! yellow-breasted chat
- ! yellow warbler
- ! arroyo chub
- ! Santa Ana sucker
- ! bobcat
- ! western pond turtle
- ! Santa Ana River woollystar

#### Biological Issues and Considerations:

- ! Conserve existing wetlands along the Santa Ana River.
- ! Conserve alluvial fan sage scrub associated with the Santa Ana River to support key populations of Santa Ana River woollystar.
- ! Conserve habitat for least Bell's vireo, southwestern willow flycatcher and western yellow-billed cuckoo along the Santa Ana River.
- ! Provide for and maintain a continuous linkage along the Santa Ana River from the eastern boundary of the Cities of Riverside/Norco to Prado Basin to the west.
- ! Conserve foraging and breeding habitats occurring in grasslands adjacent to the Santa Ana River to support sensitive bird species such as burrowing owl and loggerhead shrike.
- ! Maintain core and linkage habitat for bobcat.
- ! Maintain core habitat for the western pond turtle.
- ! Maintain habitat for arroyo chub and Santa Ana sucker.

### **3.0 Conservation Planning Process**

#### **Description and Area Plan Criteria of the MSHCP Conservation Area**

---



Subunit 2: Sycamore Canyon - West

Target acreage range for Additional Reserve Lands within Subunit: 15-40 acres

Cells within this Subunit: 719

Planning Species:

- ! Bell's sage sparrow
- ! loggerhead shrike
- ! Southern California rufous-crowned sparrow
- ! bobcat

Biological Issues and Considerations:

- ! Augment conservation in Subunit 1 of the Highgrove Area Plan.
- ! Conserve grasslands adjacent to sage scrub for foraging habitat for raptors.
- ! Maintain linkage habitat for bobcat.
- ! Conserve upland habitat supporting Bell's sage sparrow and Southern California rufous-crowned sparrow.

### 3.0 Conservation Planning Process/Description and Area Plan

#### Criteria of the MSHCP Conservation Area



TABLE 3-18. CRITERIA FOR CITIES OF RIVERSIDE/NORCO

SUB UNIT	CELL GROU	QUADRA T	USGS SECTIO	QUART ER	CRITERIA
<b>SUBUNIT 1 - Santa Ana River South</b>					
1		443	22	SW	Conservation within this Cell will contribute to assembly of Existing Core A. Conservation within this Cell will focus on Riversidean alluvial fan sage scrub, riparian scrub, woodland and forest habitat along the Santa Ana River. Areas conserved within this Cell will be connected to existing conserved wetland habitat along the Santa Ana River in Cell #534 to the southwest. Conservation within this Cell will be approximately 5% of the Cell focusing in the western portion of the Cell.
1		534	28	NE	Conservation within this Cell will contribute to assembly of Existing Core A. Conservation within this Cell will focus on grassland, riparian scrub, woodland and forest habitat expanding existing conserved wetland habitat along the Santa Ana River. Conservation within this Cell will range from 15%-25% of the Cell focusing in the southwestern portion of the Cell.
1		617	25	SW	Conservation within this Cell will contribute to assembly of Existing Core A. Conservation within this Cell will focus on lands connecting existing conserved wetland habitat along the Santa Ana River based on existing land constraints. Areas conserved within this Cell will be connected to habitat proposed for conservation in Cell #617 in the Jurupa Area Plan to the north. Conservation within this Cell will be approximately 5% of the Cell focusing in the eastern portion of the Cell.
1		621	29	SW	Conservation within this Cell will contribute to assembly of Existing Core A. Conservation within this Cell will focus on lands expanding existing conserved wetland habitat along the Santa Ana River. Conservation within this Cell will be approximately 5% of the Cell focusing in the northeastern portion of the Cell.

### 3.0 Conservation Planning Process/Description and Area Plan

#### Criteria of the MSHCP Conservation Area



**TABLE 3-18. CRITERIA FOR CITIES OF RIVERSIDE/NORCO**

SUB UNIT	CELL GROU	QUADRA T	USGS SECTIO	QUART ER	CRITERIA
1		699	32	NW	Conservation within this Cell will contribute to assembly of Existing Core A. Conservation within this Cell will focus on riparian scrub, woodland, forest and water habitat adjacent to the Santa Ana River. Areas conserved within this Cell will be connected to riparian scrub, woodland, and forest habitat proposed for conservation adjacent to the Santa Ana River in Cell #700 to the east and to riparian scrub, woodland, forest and water habitat proposed for conservation along the Santa Ana River in Cell #699 in the Jurupa Area Plan to the north. Conservation within this Cell will range from 20%-30% of the Cell focusing in the southern portion of the Cell.
1		700	32	NE	Conservation within this Cell will contribute to assembly of Existing Core A. Conservation within this Cell will focus on riparian scrub, woodland, forest and water habitat adjacent to the Santa Ana River. Areas conserved within this Cell will be connected to riparian scrub, woodland, and forest habitat proposed for conservation along the Santa Ana River in Cell #699 to the west and to riparian scrub, woodland, forest and water habitat proposed for conservation along the Santa Ana River in Cell #700 in the Jurupa Area Plan to the north. Conservation within this Cell will range from 15%-25% of the Cell focusing in the central portion of the Cell.
1		875	01	NW	Conservation within this Cell will contribute to assembly of Existing Core A. Conservation within this Cell will focus on riparian scrub, woodland and forest habitat along the Santa Ana River. Areas conserved within this Cell together with habitat proposed for conservation in Cell #876 to the east, #965 to the south, and #964 to the southwest will provide a connection from existing conserved wetland habitat northeast of Cell #876 to existing conserved wetland habitat southwest of Cell #964, and will also be connected to habitat proposed for conservation along the Santa Ana River in Cell #875 in the Eastvale Area Plan to the north. Conservation within this Cell will be approximately 5% of the Cell focusing in the southeastern portion of the Cell.

### 3.0 Conservation Planning Process/Description and Area Plan

#### Criteria of the MSHCP Conservation Area



**TABLE 3-18. CRITERIA FOR CITIES OF RIVERSIDE/NORCO**

SUB UNIT	CELL GROU	QUADRA T	USGS SECTIO	QUART ER	CRITERIA
1		876	01	NE	Conservation within this Cell will contribute to assembly of Existing Core A. Conservation within this Cell will focus on riparian scrub, woodland and forest habitat along the Santa Ana River. Areas conserved within this Cell together with habitat proposed for conservation in Cell #875 to the west, and #964 and #965 to the southwest will provide a connection from existing conserved wetland habitat northeast of this Cell to existing conserved wetland habitat southwest of Cell #964, and will also be connected to habitat proposed for conservation along the Santa Ana River in Cell #876 in the Eastvale Area Plan to the north. Conservation within this Cell will be approximately 5% of the Cell focusing in the western portion of the Cell.
1		964	02	SE	Conservation within this Cell will contribute to assembly of Existing Core A. Conservation within this Cell will focus on grassland habitat along the Santa Ana River. Areas conserved within this Cell together with habitat proposed for conservation in Cell #965 to the east, and #875 and #876 to the northeast will provide a connection from existing conserved wetland habitat northeast of Cell #876 to existing conserved wetland habitat southwest of this Cell, and will also be connected to land proposed for conservation along the Santa Ana River in Cell #964 in the Eastvale Area Plan to the north. Conservation within this Cell will be approximately 5% of the Cell focusing in the southern portion of the Cell.
1		965	01	SW	Conservation within this Cell will contribute to assembly of Existing Core A. Conservation within this Cell will focus on riparian scrub, woodland and forest habitat along the Santa Ana River. Areas conserved within this Cell together with habitat proposed for conservation in Cell #875 to the north, #876 to the northeast and #964 to the west will provide a connection from existing conserved wetland habitat northeast of Cell #876 to existing conserved wetland habitat southwest of Cell #964, and will also be connected to land proposed for conservation along the Santa Ana River in Cell #965 in the Eastvale Area Plan to the north. Conservation within this Cell will range from 5%-15% of the Cell focusing in the northern portion of the Cell.
<b>SUBUNIT 2 - Sycamore Canyon West</b>					

### 3.0 Conservation Planning Process/Description and Area Plan

#### Criteria of the MSHCP Conservation Area



TABLE 3-18. CRITERIA FOR CITIES OF RIVERSIDE/NORCO

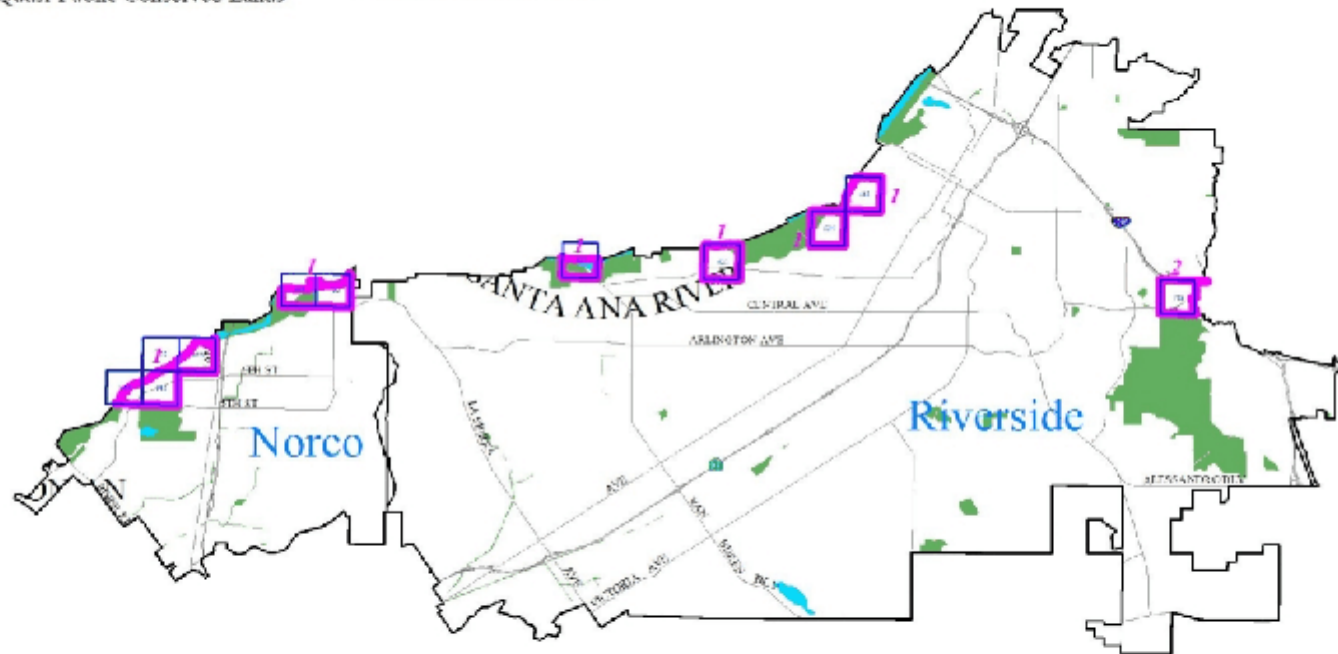
SUB UNIT	CELL GROU	QUADRA T	USGS SECTIO	QUART ER	CRITERIA
2		719	32	NE	Conservation within this Cell will contribute to assembly of Proposed Constrained Linkage 7. Conservation within this Cell will focus on coastal sage scrub and grassland habitat. Areas conserved within this Cell will be connected to coastal sage scrub habitat proposed for conservation in Cell #721 in the Highgrove Area Plan to the east. Conservation within this Cell will range from 15%-25% of the Cell focusing in the southeastern portion of the Cell.

# 3.0 Conservation Planning Process/Description and Area Plan

## Criteria of the MSHCP Conservation Area



- Cell With Unique ID
- Waterbodies
- Public/Quasi-Public Conserved Lands
- Area Plan Subunit With ID Number
- 1 = Santa Ana River South
- 2 = Sycamore Canyon/Hot Springs West



This map is a draft document. The map may not represent the most current information available and may be subject to change without notice. The geographic information system and other content displayed is provided for informational purposes only. The map is not intended to be used for any purpose other than that for which it was prepared. The map is not intended to be used for any purpose other than that for which it was prepared. The map is not intended to be used for any purpose other than that for which it was prepared.



Cities of Riverside & Norco With Cells, Cell Groups & Subunits Keyed to MSHCP Criteria

Figure 3-11



3-173

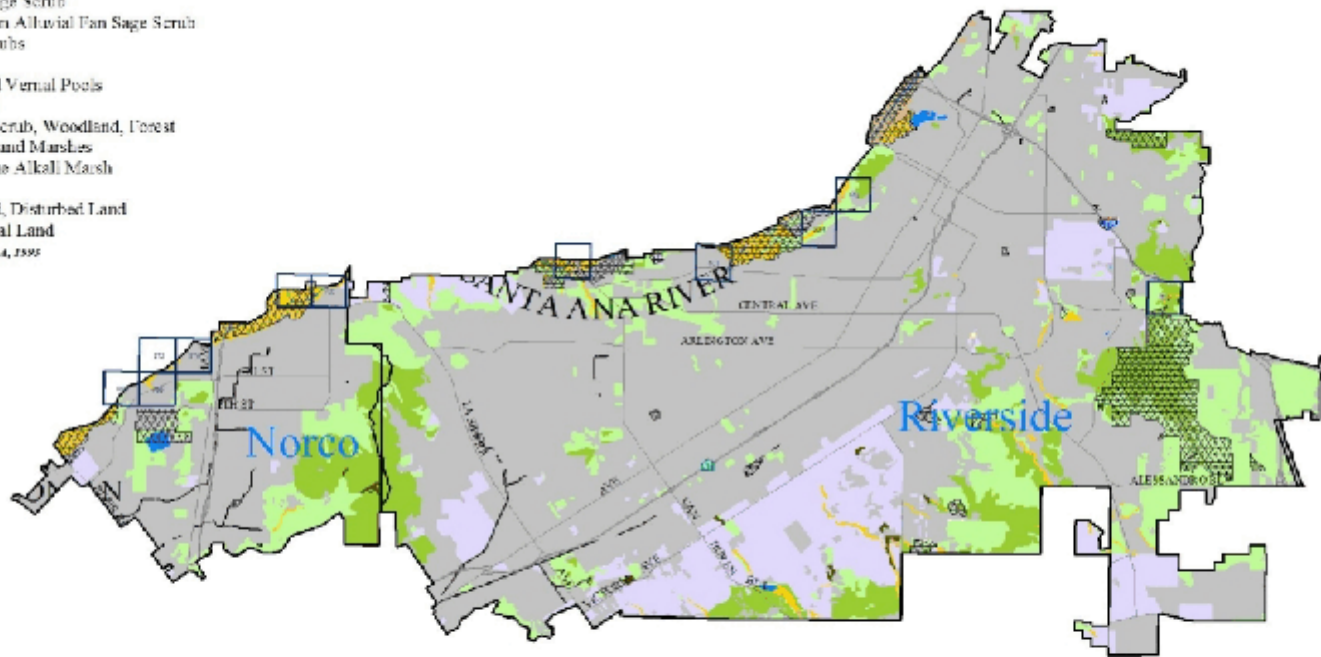
# 3.0 Conservation Planning Process/Description and Area Plan

## Criteria of the MSHCP Conservation Area



- Vegetation Communities:**
- Montane Coniferous Forest
  - Woodlands and Forests
  - Coastal Sage Scrub
  - Riversidean Alluvial Fan Sage Scrub
  - Desert Scrubs
  - Chaparral
  - Playas and Vernal Pools
  - Grassland
  - Riparian Scrub, Woodland, Forest
  - Meadows and Marshes
  - Cismontane Alkali Marsh
  - Water
  - Developed, Disturbed Land
  - Agricultural Land

- Cell With Unique ID
- Public/Quasi-Public Conserved Lands



This map is a technical drawing. It may not accurately represent the actual conditions on the ground. The geographic information system data used to create this map is not a warranty, representation, or guarantee of accuracy. It is provided for informational purposes only. No liability is assumed for any errors or omissions, including those caused by third parties.



Cities of Riverside & Norco With Vegetation, Cells and Cell Groups Keyed to MSHCP Criteria



Figure 3-53