

### **3.0 Conservation Planning Process/ Description and Area Plan Criteria of the MSHCP Conservation Area**

---



A variety of Linkages and Constrained Linkages are included in the Conceptual Conservation Scenario but absent from this alternative including substantial Linkages east of Lake Skinner and Diamond Valley Lake; the upland portions of the Linkage along Temescal Wash north of Alberhill; the Tenaja corridor Linkage; and the Cahuilla Creek Linkage east of the Vail Lake/Wilson Creek/Sage Core Area. Constrained Linkages absent from this alternative include lower Warm Springs and Tucalota Creeks; a variety of optional Linkages along upper Warm Springs Creek and in the French Valley area; Linkages to the Santa Ana River via Springbrook Wash and channelized portions of Temescal Wash; and Linkages in the Cherry Valley, Banning Bench and Banning Idyllwild panoramic highway areas. Although these Linkages would contribute to the overall Conceptual Conservation Scenario, they do not provide substantial support for the focus species under this alternative and so are not depicted under this alternative scenario. The channelized portion of Temescal Creek may support breeding for the Santa Ana sucker and this area would need to be considered for inclusion in the MSHCP Conservation Area under this alternative.

#### **3.4.2 Listed and Proposed Species Alternative**

This alternative was developed at the request of the MSHCP Advisory Committee to depict a potential conservation scenario that would address only listed and proposed species. A total of 32 listed and proposed species occur in the MSHCP Plan Area as listed in the description for the Listed, Proposed and Strong Candidates alternative. It should be noted that this alternative focuses largely on the conservation of the 32 listed and proposed species within the MSHCP Plan Area, with less consideration of the broad-based NCCP biological tenets. While large Habitat blocks and broad Linkages are incorporated in this alternative in some areas to provide for a conservation scenario that would address the conservation needs of the listed and proposed species, less emphasis is placed in this alternative on broad-based ecosystem conservation.

The generalized reserve configuration under this alternative is depicted in *Figure 3-37*. *Table 3-20* provides a summary of acreages potentially conserved under this alternative, by Vegetation Community. These acreages are estimates of areas that are anticipated to be conserved from within the generalized reserve configuration depicted in *Figure 3-37*. As shown in *Table 3-20*, under this alternative a total of 439,140 acres would be conserved, including 346,530 acres within existing Public/Quasi-Public Lands and 92,610 acres of Additional Reserve Lands.

### **3.0 Conservation Planning Process/Description and Plan Description and Area Plan Criteria Criteria for the MSHCP Conservation Area**

---



# 3.0 Conservation Planning Process/Description and Area Plan

## Criteria of the MSHCP Conservation Area

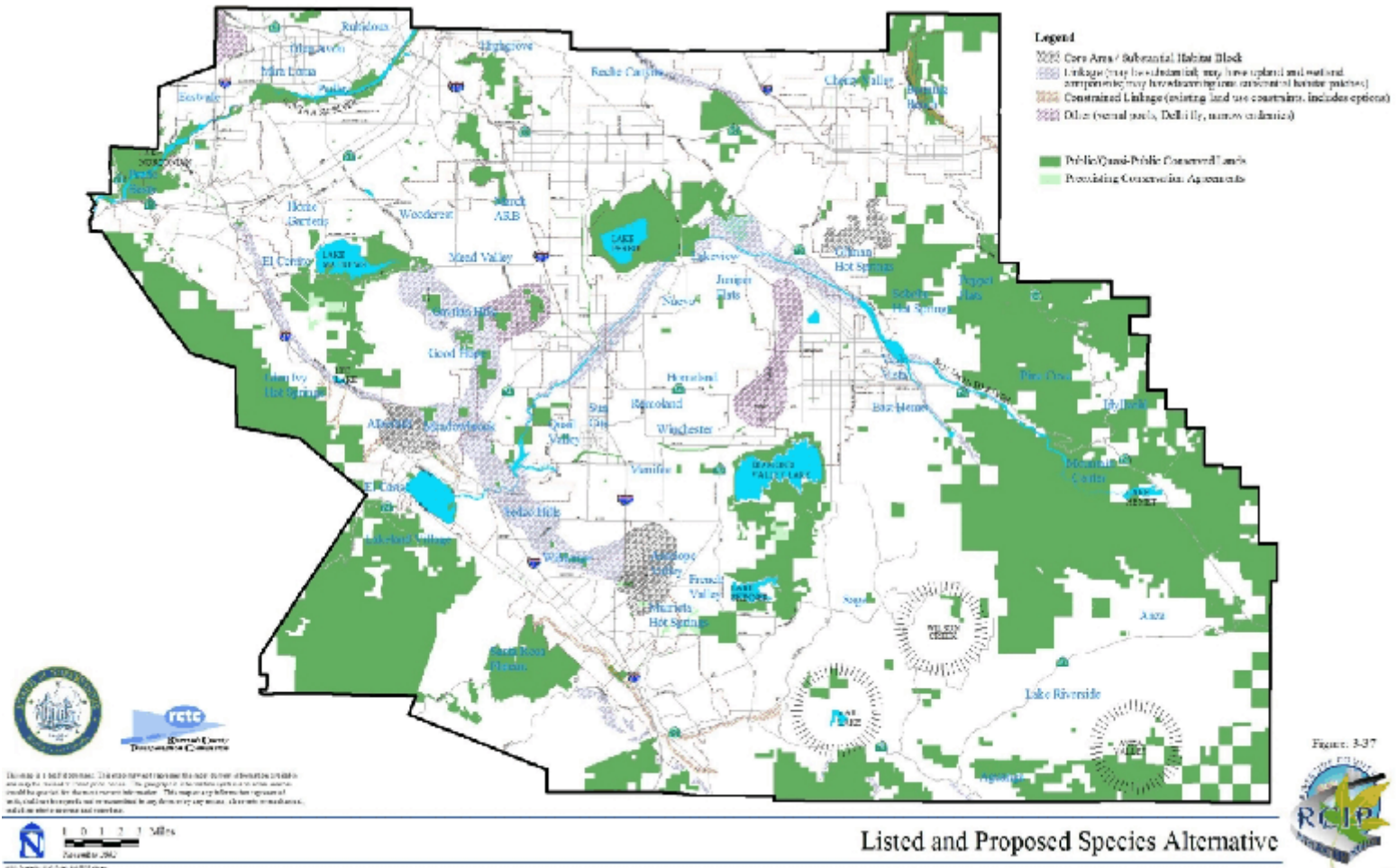


Figure 3-37  
  
 3-463

### 3.0 Conservation Planning Process/ Description and Area Plan Criteria of the MSHCP Conservation Area



**TABLE 3-20  
LISTED AND PROPOSED SPECIES ALTERNATIVE  
VEGETATION SUMMARY**

Vegetation Type	Total Acres in Plan Area	Total Acres in Existing Public/Quasi-Public Lands	Total Acres of Additional Reserve Lands	Total Acres Conserved	Percent of Total Vegetation Community Acres Conserved in Plan Area
Agriculture	169,480	11,480	14,900	26,380	16%
Chaparral	434,950	207,380	27,010	234,390	54%
Cismontane Alkali Marsh	1,260	<5	<5	<5	<1%
Coastal Sage Scrub	156,450	34,560	29,830	64,390	41%
Desert Scrubs	14,570	1,310	--	1,310	9%
Grassland	154,140	22,810	11,210	34,020	22%
Meadows and Marshes	1,020	330	80	410	40%
Montane Coniferous Forest	29,910	20,480	30	20,510	69%
Playas and Vernal Pools	7,910	2,920	2,930	5,850	74%
Riparian Scrub, Woodland, Forest	15,030	7,270	1,800	9,070	60%
Riversidean Alluvial Fan Sage Scrub	7,940	2,060	2,360	4,420	56%
Unknown	1,350	1,230	10	1,240	92%
Water	12,210	9,150	860	10,010	82%
Woodlands and Forests	34,300	20,770	1,590	22,360	65%
Developed or Disturbed Land	218,260	4,780	--	4,780	2%
<b>TOTALS</b>	<b>1,258,780</b>	<b>346,530</b>	<b>92,610</b>	<b>439,140</b>	

### **3.0 Conservation Planning Process/ Description and Area Plan Criteria of the MSHCP Conservation Area**

---



New Core Areas in the Vail Lake/WilsonCreek/Sage and Anza Valley areas identified in the August 9, 1999 “Draft MSHCP Proposal” were identified in this alternative. Conservation needs for the following species are located in these areas: *Vail Lake/Wilson Creek/Sage* - Quino checkerspot butterfly, coastal California gnatcatcher, least Bell’s vireo, arroyo toad; *Vail Lake* ceanothus, Nevin’s barberry; slender-horned spine flower; *Anza Valley* - Stephens’ kangaroo rat, Quino checkerspot butterfly.

Conservation of the Potrero portion of the Badlands is also anticipated under this alternative. Conservation in this area is focused on Stephens’ kangaroo rat and least Bell’s vireo.

Habitat blocks included in the Conceptual Conservation Scenario but absent from this alternative include Double Butte and the Lakeview Mountains. While they represent large blocks of intact Habitat and support a variety of species, they do not support substantial populations or meet Habitat requirements for the focus species under this alternative and therefore are not included in this alternative. Conservation in the Jurupa Mountains is not anticipated under this alternative. Scattered coastal California gnatcatcher observations are known from the Jurupa Mountains and this area may contribute to conservation of the coastal California gnatcatcher outside the MSHCP Plan Area. The coastal California gnatcatcher is a listed species and one of the focus species under this alternative. For this reason, the Jurupa Mountains may need to be evaluated in greater detail should this alternative be selected for further study.

Linkages included in the Conceptual Conservation Scenario but absent from this alternative include the Tule Creek Linkage and the Linkage east of Johnson Ranch and south of Lake Skinner. These Linkages were included in the Conceptual Conservation Scenario for conservation of Los Angeles pocket mouse and burrowing owl respectively. Since these species are not focus species under this listed and proposed species alternative, they are not included in this alternative.

#### **3.4.3 Existing Reserves**

At the request of the MSHCP Advisory Committee, the MSHCP consultant completed a brief analysis of species conservation that could potentially occur under an alternative that focused on existing reserves only. It should be noted that under this scenario, there would be no MSHCP or associated federal and state permits authorizing Incidental Take.