

3.0 Conservation Planning Process/ Description and Area Plan Criteria of the MSHCP Conservation Area



New Core Areas in the Vail Lake/WilsonCreek/Sage and Anza Valley areas identified in the August 9, 1999 “Draft MSHCP Proposal” were identified in this alternative. Conservation needs for the following species are located in these areas: *Vail Lake/Wilson Creek/Sage* - Quino checkerspot butterfly, coastal California gnatcatcher, least Bell’s vireo, arroyo toad; *Vail Lake* ceanothus, Nevin’s barberry; slender-horned spine flower; *Anza Valley* - Stephens’ kangaroo rat, Quino checkerspot butterfly.

Conservation of the Potrero portion of the Badlands is also anticipated under this alternative. Conservation in this area is focused on Stephens’ kangaroo rat and least Bell’s vireo.

Habitat blocks included in the Conceptual Conservation Scenario but absent from this alternative include Double Butte and the Lakeview Mountains. While they represent large blocks of intact Habitat and support a variety of species, they do not support substantial populations or meet Habitat requirements for the focus species under this alternative and therefore are not included in this alternative. Conservation in the Jurupa Mountains is not anticipated under this alternative. Scattered coastal California gnatcatcher observations are known from the Jurupa Mountains and this area may contribute to conservation of the coastal California gnatcatcher outside the MSHCP Plan Area. The coastal California gnatcatcher is a listed species and one of the focus species under this alternative. For this reason, the Jurupa Mountains may need to be evaluated in greater detail should this alternative be selected for further study.

Linkages included in the Conceptual Conservation Scenario but absent from this alternative include the Tule Creek Linkage and the Linkage east of Johnson Ranch and south of Lake Skinner. These Linkages were included in the Conceptual Conservation Scenario for conservation of Los Angeles pocket mouse and burrowing owl respectively. Since these species are not focus species under this listed and proposed species alternative, they are not included in this alternative.

3.4.3 Existing Reserves

At the request of the MSHCP Advisory Committee, the MSHCP consultant completed a brief analysis of species conservation that could potentially occur under an alternative that focused on existing reserves only. It should be noted that under this scenario, there would be no MSHCP or associated federal and state permits authorizing Incidental Take.

3.0 Conservation Planning Process/ Description and Area Plan Criteria of the MSHCP Conservation Area



The existing reserves only alternative is depicted in *Figure 3-38*. *Table 3-21* summarizes vegetation acreages that would potentially be conserved under this alternative. The level of conservation within existing reserves would be dependent upon activities within the reserves and resource protection efforts undertaken by the Reserve Managers. Information regarding the size, character and mission of the existing reserves is included in the *MSHCP Description of Existing Reserves* document (April 2000) previously distributed to the MSHCP Advisory Committee. Under this alternative, it is assumed that no additional conservation or management would occur within the existing reserves beyond that currently occurring or what might occur in the future with implementation of the USFS Southern California Conservation Strategy.

TABLE 3-21. EXISTING RESERVES ALTERNATIVE VEGETATION SUMMARY

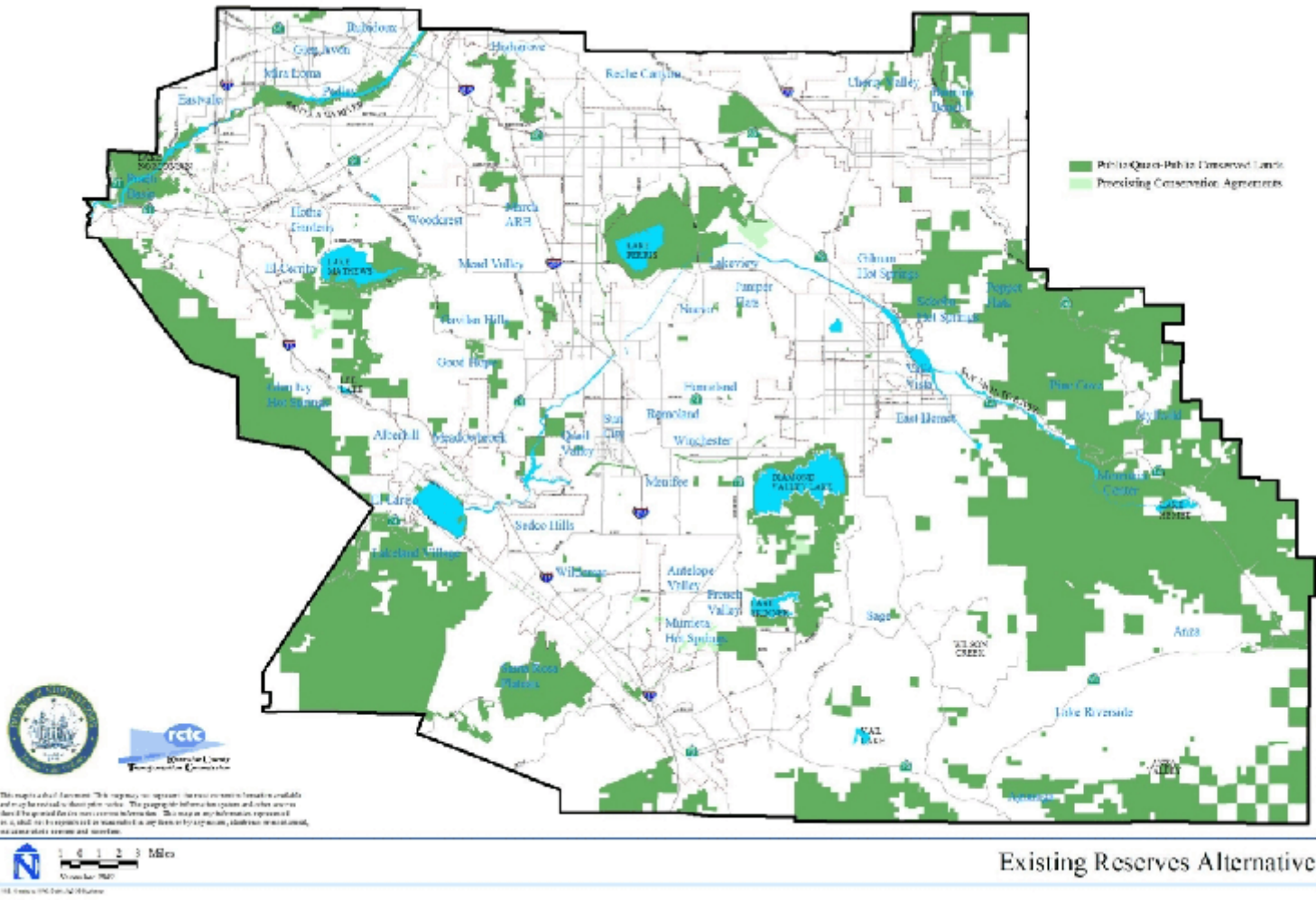
| Vegetation Type | Total Acres in Plan Area | Total Acres in Existing Public/Quasi-Public Lands | Percent of Total Vegetation Community Acres Conserved in Plan Area |
|-------------------------------------|--------------------------|---|--|
| Agriculture | 169,480 | 11,480 | 7% |
| Chaparral | 434,950 | 207,380 | 48% |
| Cismontane Alkali Marsh | 1,260 | <5 | <1% |
| Coastal Sage Scrub | 156,450 | 34,560 | 22% |
| Desert Scrubs | 14,570 | 1,310 | 9% |
| Grassland | 154,140 | 22,810 | 15% |
| Meadows and Marshes | 1,020 | 330 | 32% |
| Montane Coniferous Forest | 29,910 | 20,480 | 68% |
| Playas and Vernal Pools | 7,910 | 2,920 | 37% |
| Riparian Scrub, Woodland, Forest | 15,030 | 7,270 | 48% |
| Riversidean Alluvial Fan Sage Scrub | 7,940 | 2,060 | 26% |
| Unknown | 1,350 | 1,230 | 91% |
| Water | 12,210 | 9,150 | 75% |
| Woodlands and Forests | 34,300 | 20,770 | 61% |
| Developed or Disturbed Land | 218,260 | 4,780 | 2% |
| TOTALS | 1,258,780 | 346,530 | |

3.0 Conservation Planning Process/Description and Area Plan Description and Area Plan Criteria



3.0 Conservation Planning Process/Description and Area Plan

Criteria of the MSHCP Conservation Area



3.0 Conservation Planning Process/ Description and Area Plan Criteria of the MSHCP Conservation Area



A brief summary of potential species conservation under the Existing Reserves alternative is presented in *Table 3-22*. The information provided in *Table 3-22* does provide an indication of species not “protected” under this alternative. As shown in the table, of the 32 listed and proposed species, only two bird species (peregrine falcon and western yellow-billed cuckoo) would be considered to be “protected” under this alternative. One mammal species, Stephens’ kangaroo rat, would be conserved based on the existing HCP; however, protection would not be expanded to populations outside the existing HCP area. In addition, two amphibian species, mountain yellow-legged frog and California red-legged frog, and three plant species, San Diego button-celery, Mojave tarplant, and Parish’s meadowfoam could be considered to be “protected” based on conservation on Santa Rosa Plateau and on USFS lands. The remaining 24 listed and proposed species would not be considered to be “protected” under this alternative.

**TABLE 3-22
SUMMARY OF POTENTIAL SPECIES CONSERVATION
UNDER EXISTING RESERVES ALTERNATIVE**

| Common Name | Scientific Name | Notes |
|------------------------------------|--|--|
| LISTED AND PROPOSED SPECIES | | |
| INVERTEBRATES/CRUSTACEANS | | |
| Riverside fairy shrimp | <i>Streptocephalus woottoni</i> | Not conserved, Hemet and other potential habitat not conserved. |
| vernal pool fairy shrimp | <i>Branchinecta lynchi</i> | Not conserved, although conserved at Santa Rosa Plateau, it is not conserved elsewhere. |
| INVERTEBRATES/INSECTS | | |
| Quino checkerspot butterfly | <i>Euphydryas editha quino</i> | Not conserved, Sage, Wilson Valley, Murrieta and Temecula not included. |
| Delhi Sands flower-loving fly | <i>Rhaphiomidas terminatus abdominalis</i> | Not conserved, Mira Loma, Jurupa not included. |
| FISH | | |
| Santa Ana sucker | <i>Catostomus santaanae</i> | Not conserved, because the breeding areas for the fish, Temescal Wash and San Timoteo Creek, are not included. |
| AMPHIBIANS | | |
| California red-legged frog | <i>Rana aurora draytonii</i> | Conserved depending on 4-forest plan and Santa Rosa Plateau. |
| mountain yellow-legged frog | <i>Rana muscosa</i> | Conserved depending on 4-forest plan. |
| arroyo toad | <i>Bufo californicus</i> | Not conserved, habitat. |
| REPTILES | | |

3.0 Conservation Planning Process/ Description and Area Plan Criteria of the MSHCP Conservation Area



TABLE 3-22 (Continued)
SUMMARY OF POTENTIAL SPECIES CONSERVATION
UNDER EXISTING RESERVES ALTERNATIVE

| Common Name | Scientific Name | Notes |
|--------------------------------|--|---|
| southern rubber boa | <i>Charina bottae umbratica</i> | Not conserved, habitat |
| BIRDS | | |
| bald eagle | <i>Haliaeetus leucocephalus</i> | Not conserved, needs larger foraging area around the lakes that they winter at (such as Lake Elsinore, Lake Perris, Vail Lake, Lake Skinner, Lake Mathews). Need less urbanization within the areas where they winter. |
| coastal California gnatcatcher | <i>Poliptila californica californica</i> | Not conserved, missing key populations in Alberhill, Sedco Hills, Canyon Lake, and corridor connection to Lake Skinner. |
| least Bell's vireo | <i>Vireo bellii pusillus</i> | Not conserved, still need other populations in Temecula Creek, Wilson Creek, Santa Margarita River, Potrero Creek, Murrieta Creek, Temescal Wash, San Timoteo Creek, Chino Creek, Alberhill Creek, Tualota Creek; although do get Santa Ana River and Prado, it's missing too many key populations. |
| mountain plover | <i>Charadrius montanus</i> | Not conserved, need Mystic Lake and foraging area in the Menifee/Winchester/Perris/Nuevo area. |
| peregrine falcon | <i>Falco peregrinus</i> | Conserved, regular visiting areas are protected at Prado Basin, Santa Ana River, San Jacinto Wildlife Area, Lake Perris, Lake Skinner. |
| southwestern willow flycatcher | <i>Empidonax traillii extimus</i> | Not conserved, although population in Prado Basin and Santa Ana River is protected, all locations are key and this misses the locations in Temecula River, Santa Margarita River, Murrieta Creek. |
| Swainson's hawk | <i>Buteo swainsoni</i> | Not conserved, because could occur anywhere and don't get sufficient foraging habitat in central part. |
| western yellow-billed cuckoo | <i>Coccyzus americanus occidentalis</i> | Conserved, only populations are in Santa Ana River and Prado Basin. |
| MAMMALS | | |
| San Bernardino kangaroo rat | <i>Dipodomys merriami parvus</i> | Not conserved, populations in Upper San Jacinto & Bautista not included. |
| Stephens' kangaroo rat | <i>Dipodomys stephensi</i> | Conserved, however, coverage would not be expanded to populations outside of existing HCP area. |
| PLANTS | | |
| California Orcutt grass | <i>Orcuttia californica</i> | Not conserved, doesn't include habitat where it is located (Salt Creek). |
| Mojave tarplant | <i>Deinandra mohavensis</i> | Conserved, all known populations in National Forest. |
| Munz's onion | <i>Allium munzii</i> | Not conserved, major populations are not captured |

3.0 Conservation Planning Process/ Description and Area Plan Criteria of the MSHCP Conservation Area



TABLE 3-22 (Continued)
SUMMARY OF POTENTIAL SPECIES CONSERVATION
UNDER EXISTING RESERVES ALTERNATIVE

| Common Name | Scientific Name | Notes |
|-------------------------------|---|--|
| | | within boundaries. |
| Nevin's barberry | <i>Berberis nevinii</i> | Not conserved, area does not encompass Vail Lake. |
| Parish's meadowfoam | <i>Limnanthes gracilis</i> var. <i>parishii</i> | Conserved within the Santa Rosa Plateau Preserve. |
| San Diego ambrosia | <i>Ambrosia pumila</i> | Not conserved, population at Nichols Road is not included. |
| San Diego button-celery | <i>Eryngium aristulatum</i> var. <i>parishii</i> | Conserved, only populations are in Santa Rosa Plateau Preserve. |
| San Jacinto Valley crownscale | <i>Atriplex coronata</i> var. <i>notatior</i> | Not conserved, San Jacinto River, Mystic Lake, or Upper Salt Creek are not included. |
| Santa Ana River woollystar | <i>Eriastrum densifolium</i> ssp. <i>sanctorum</i> | Not conserved, because floodplain along Santa Ana River is not included. |
| slender-horned spine flower | <i>Dodecahema leptoceras</i> | Not conserved, habitat and population Arroyo Seco, Kolb Creek, and Vail Lake are not included. |
| spreading navarretia | <i>Navarretia fossalis</i> | Not conserved, San Jacinto River populations not conserved. |
| thread-leaved brodiaea | <i>Brodiaea filifolia</i> | Not conserved, Population along San Jacinto River is not included. |
| Vail Lake ceanothus | <i>Ceanothus ophiochilus</i> | Not conserved, Vail Lake populations are not conserved. |

3.0 Conservation Planning Process/ Description and Area Plan Criteria of the MSHCP Conservation Area



TABLE 3-22 (Continued)
SUMMARY OF POTENTIAL SPECIES CONSERVATION
UNDER EXISTING RESERVES ALTERNATIVE

| Common Name | Scientific Name | Notes |
|------------------------------------|---|--|
| OTHER SPECIES | | |
| INVERTEBRATES/INSECTS | | |
| Santa Rosa Plateau fairy shrimp | <i>Linderiella santarosae</i> | Conserved |
| FISH | | |
| arroyo chub | <i>Gila orcutti</i> | Not conserved, because only the population in the Santa Ana River is included. The populations in the Santa Margarita, Temescal Wash, and Temecula Creek are not included. |
| AMPHIBIANS | | |
| coast range newt | <i>Taricha torosa torosa</i> | Not conserved, habitat |
| western spadefoot | <i>Scaphiopus hammondii</i> | Not conserved, habitat |
| REPTILES | | |
| Belding's orange-throated whiptail | <i>Cnemidophorus hyperythrus beldingi</i> | Not conserved, habitat is not included among boundaries. |
| coastal western whiptail | <i>Cnemidophorus tigris multiscutatus</i> | Not conserved, does not capture habitat. |
| granite night lizard | <i>Xantusia henshawi henshawi</i> | Not conserved, does not capture habitat. |
| granite spiny lizard | <i>Sceloporus orcuttii orcuttii</i> | Not conserved, does not capture habitat. |
| northern red diamond rattlesnake | <i>Crotalus ruber ruber</i> | Probably conserved, sage scrub habitat and rocky chaparral. |
| San Bernardino mtn. kingsnake | <i>Lampropeltis zonata parvirubra</i> | Conditionally conserved depending on 4-forest plan. |
| San Diego banded gecko | <i>Coleonyx variegatus abbottii</i> | Not conserved, most areas not conserved. |
| San Diego horned lizard | <i>Phrynosoma coronatum blainvillei</i> | Not conserved, habitat |
| San Diego mountain kingsnake | <i>Lampropeltis zonata pulchra</i> | Conditionally conserved depending on 4-forest plan. |
| southern sagebrush lizard | <i>Sceloporus graciosus vandenburgianus</i> | Not conserved, habitat |
| western pond turtle | <i>Clemmys marmorata pallida</i> | Not conserved, habitat |
| BIRDS | | |
| American bittern | <i>Botaurus lentiginosus</i> | Not conserved, because only the population in the Santa Ana River is included. The populations in the Mystic Lake are not included |
| Bell's sage sparrow | <i>Amphispiza belli belli</i> | Not conserved, because don't get breeding locations or foraging area in locations such as Canyon Lake, |

3.0 Conservation Planning Process/ Description and Area Plan Criteria of the MSHCP Conservation Area



**TABLE 3-22 (Continued)
SUMMARY OF POTENTIAL SPECIES CONSERVATION
UNDER EXISTING RESERVES ALTERNATIVE**

| Common Name | Scientific Name | Notes |
|---------------------------|---|--|
| | | Wildomar, Murrieta, Badlands. |
| black-crowned night-heron | <i>Nycticorax nycticorax</i> | Conserved, only breeding populations are in Santa Ana River and Prado Basin. |
| black swift (breeding) | <i>Cypseloides niger</i> | This species is conserved with the existing reserves if the 4-forest management plan addresses both listed and non-listed species identified as part of the MSHCP. |
| burrowing owl | <i>Athene cunicularia hypugaea</i> | Not conserved, because don't get sufficient grassland areas such as Aguanga, sage, Temecula area. |
| cactus wren | <i>Campylorhynchus brunneicapillus couesi</i> | Not conserved, because don't get breeding locations in patches dominated by cactus such as Anza, Badlands, Temecula area. |
| California horned lark | <i>Eremophila alpestris actia</i> | Not conserved, because don't get sufficient grassland areas such as Aguanga, sage, Temecula area. |
| California spotted owl | <i>Strix occidentalis occidentalis</i> | This species is conserved with the existing reserves if the 4-forest management plan addresses both listed and non-listed species identified as part of the MSHCP. |
| Cooper's hawk | <i>Accipiter cooperii</i> | Not conserved, because don't get breeding locations or foraging habitat in woodland areas such as Temecula Creek, Murrieta Creek, Alberhill, Canyon Lake. |
| double-crested cormorant | <i>Phalacrocorax auritus</i> | Conserved, only breeding populations are in Santa Ana River and Prado Basin. |
| downy woodpecker | <i>Picoides pubescens</i> | Not conserved, because don't get breeding locations or foraging habitat in woodland areas such as Temecula Creek, Murrieta Creek, Alberhill, Canyon Lake. |
| ferruginous hawk | <i>Buteo regalis</i> | Not conserved, because could occur anywhere and don't get sufficient foraging habitat in central part. |
| golden eagle | <i>Aquila chrysaetos</i> | Not conserved, because don't know locations for nesting and don't get enough foraging habitat or locations such as Badlands, Potrero, Hemet area, and Banning. |
| grasshopper sparrow | <i>Ammodramus savannarum</i> | Not conserved, because don't get the grassland areas such as in Lake Elsinore, Canyon Lake, Murrieta, Temecula. |
| Lincoln's sparrow | <i>Melospiza lincolnii</i> | This species is conserved with the existing reserves if the 4-forest management plan addresses both listed and non-listed species identified as part of the |

3.0 Conservation Planning Process/ Description and Area Plan Criteria of the MSHCP Conservation Area



**TABLE 3-22 (Continued)
SUMMARY OF POTENTIAL SPECIES CONSERVATION
UNDER EXISTING RESERVES ALTERNATIVE**

| Common Name | Scientific Name | Notes |
|--------------------------------|------------------------------|--|
| | | MSHCP. |
| loggerhead shrike | <i>Lanius ludovicianus</i> | Not conserved, because don't get foraging habitat in grassland areas such as Temecula Creek, Murrieta Creek, Badlands, Aguanga. |
| MacGillivray's warbler | <i>Oporonis tolmiei</i> | This species is conserved with the existing reserves if the 4-forest management plan addresses both listed and non-listed species identified as part of the MSHCP. |
| merlin | <i>Falco columbarius</i> | Not conserved, because could occur anywhere and don't get sufficient foraging habitat in central part. |
| mountain quail | <i>Oreortyx pictus</i> | This species is conserved with the existing reserves if the 4-forest management plan addresses both listed and non-listed species identified as part of the MSHCP. |
| Nashville warbler | <i>Vermivora ruficapilla</i> | This species is conserved with the existing reserves if the 4-forest management plan addresses both listed and non-listed species identified as part of the MSHCP. |
| northern goshawk | <i>Accipiter gentilis</i> | This species is conserved with the existing reserves if the 4-forest management plan addresses both listed and non-listed species identified as part of the MSHCP. |
| northern harrier (breeding) | <i>Circus cyaneus</i> | Not conserved, because don't know breed in locations and don't get the areas around Lake Elsinore, Temecula, Murrieta areas. |

3.0 Conservation Planning Process/ Description and Area Plan Criteria of the MSHCP Conservation Area



**TABLE 3-22 (Continued)
SUMMARY OF POTENTIAL SPECIES CONSERVATION
UNDER EXISTING RESERVES ALTERNATIVE**

| Common Name | Scientific Name | Notes |
|--|-------------------------------------|---|
| osprey | <i>Pandion haliaetus</i> | Conserved, not known to breed in area. Foraging habitat is protected in the open reservoirs such as Lake Perris, Lake Mathews, Lake Skinner. |
| prairie falcon (breeding) | <i>Falco mexicanus</i> | Not conserved, because could occur anywhere and don't get breeding locations or sufficient foraging habitat in areas such as Mystic Lake and Moreno Valley/ Beaumont/Banning area. |
| purple martin | <i>Progne subis</i> | This species is conserved with the existing reserves if the 4-forest management plan addresses both listed and non-listed species identified as part of the MSHCP. |
| sharp-shinned hawk | <i>Accipiter striatus</i> | Not conserved, because don't know locations of breeding and don't get sufficient winter foraging areas in the rest of the area such as Banning, Alberhill, Homeland. |
| Southern California rufous-crowned sparrow | <i>Aimophila ruficeps canescens</i> | Not conserved, don't get sufficient breeding and foraging locations such as Alberhill, Murrieta, Wildomar, Temecula, or the habitat linkages. |
| tree swallow | <i>Tachycineta bicolor</i> | Not conserved, because don't get breeding locations or foraging habitat in woodland areas such as Temecula Creek, Murrieta Creek, Alberhill, Canyon Lake. |
| tricolored blackbird (colony) | <i>Agelaius tricolor</i> | Not conserved, because don't know locations of breeding and don't get past locations such as Mystic Lake and Badlands. |
| turkey vulture (breeding) | <i>Cathartes aura</i> | Not conserved, because don't know locations of breeding, don't get sufficient foraging habitat such as Lakeview Mts and Badlands. |
| white-faced ibis | <i>Plegadis chihi</i> | Not conserved, because need areas around Mystic Lake. |
| white-tailed kite | <i>Elanus leucurus</i> | Not conserved, because don't know breeding locations in wooded or riparian areas or foraging habitat in grassland areas such as Temecula Creek, Murrieta Creek, Alberhill, Canyon Lake. |
| Williamson's sapsucker | <i>Sphyrapicus thyroideus</i> | This species is conserved with the existing reserves if the 4-forest management plan addresses both listed and non-listed species identified as part of the MSHCP. |
| Wilson's warbler | <i>Wilsonia pusilla</i> | This species is conserved with the existing reserves if |

3.0 Conservation Planning Process/ Description and Area Plan Criteria of the MSHCP Conservation Area



**TABLE 3-22 (Continued)
SUMMARY OF POTENTIAL SPECIES CONSERVATION
UNDER EXISTING RESERVES ALTERNATIVE**

| Common Name | Scientific Name | Notes |
|-------------------------------------|--|--|
| | | the 4-forest management plan addresses both listed and non-listed species identified as part of the MSHCP. |
| yellow warbler | <i>Dendroica petechia brewsteri</i> | Not conserved, because don't get breeding locations or foraging habitat in woodland areas such as Temecula Creek, Murrieta Creek, Alberhill, Canyon Lake. |
| yellow-breasted chat | <i>Icteria virens auricollis</i> | Not conserved, because don't get breeding locations or foraging habitat in woodland areas such as Temecula Creek, Murrieta Creek, Alberhill, Canyon Lake. |
| MAMMALS | | |
| Aguanga kangaroo rat | <i>Dipodomys merriami collinus</i> | Not conserved. Sage and Aguanga areas not conserved |
| bobcat | <i>Lynx rufus californicus</i> | Not Conserved, habitat connections with National Forests, and other key habitat locations, may not be conserved. |
| brush rabbit | <i>Sylvilagus bachmani</i> | Conserved. Adequate habitat in public lands would be conserved. |
| coyote | <i>Canis latrans clepticus</i> | Conserved. Species is adaptable to humans and relatively urbanized landscapes. |
| long-tailed weasel | <i>Mustela frenata</i> | Not conserved. Linkages throughout Plan Area. |
| Los Angeles pocket mouse | <i>Perognathus longimembris brevinasus</i> | Not conserved. Drainages such as San Jacinto River, Temecula Creek, San Timoteo Creek, and Reche Canyon are not conserved. Other areas not conserved: Anza, Sage, Aguanga, Lagunga, Badlands, Potrero Valley, Cactus Valley, Banning/Beaumont. |
| mountain lion | <i>Puma concolor</i> | Not conserved. Habitat linkages between Santa Ana Mountains and Agua Tibia Mountains (etc.) would not be conserved. Badlands would not be conserved. |
| northwestern San Diego pocket mouse | <i>Chaetodipus fallax fallax</i> | Conserved. Adequate conservation in existing reserve system. |
| San Bernardino flying squirrel | <i>Glaucomys sabrinus californicus</i> | Conserved. Occurs in San Bernardino National Forest and subject to Forest Plan. |
| San Diego black-tailed jackrabbit | <i>Lepus californicus bennettii</i> | Not conserved. Lack conservation in Lakeview Mountains, Jurupa Hills, along the San Jacinto River, Sage/Aguanga, Vail Lake, and Anza. Habitat connections would not be conserved. |
| San Diego desert woodrat | <i>Neotoma lepida intermedia</i> | Potentially could be conserved under existing reserve system. |

3.0 Conservation Planning Process/ Description and Area Plan Criteria of the MSHCP Conservation Area



TABLE 3-22 (Continued)
SUMMARY OF POTENTIAL SPECIES CONSERVATION
UNDER EXISTING RESERVES ALTERNATIVE

| Common Name | Scientific Name | Notes |
|-------------------------------|--|---|
| PLANTS | | |
| beautiful hulsea | <i>Hulsea vestita ssp. callicarpha</i> | Conserved, depending on 4-forest plan. |
| California beardtongue | <i>Penstemon californicus</i> | Conserved, depending on 4-forest plan. |
| California bedstraw | <i>Galium californicum ssp. primum</i> | Conserved, depending on 4-forest plan. |
| California black walnut | <i>Juglans californica</i> var. <i>californica</i> | Not conserved, hills east and west of Santa Rosa Plateau, Pedley, Rubidoux. |
| California muhly | <i>Muhlenbergia californica</i> | Not conserved, Sage Aguanga, Estelle Mountain, Gavilan Hills and Gavilan Plateau, La Paz Canyon, Temescal Canyon, near Prado Dam. |
| chickweed oxytheca | <i>Oxytheca caryophylloides</i> | Conserved, depending on 4-forest plan. |
| Cleveland's bush monkeyflower | <i>Mimulus clevelandii</i> | Yes, because of the included sections of forest. |
| cliff cinquefoil | <i>Potentilla rimicola</i> | Conserved, depending on 4-forest plan. |
| Coulter's goldfields | <i>Lasthenia glabrata ssp. coulteri</i> | Not conserved, Mystic Lake, alkali flats between Lake Elsinore and Alberhill, and San Jacinto River. |
| Coulter's matilija poppy | <i>Romneya coulteri</i> | Not conserved, Alberhill, Lake Skinner, Railroad Canyon, Murrieta, Hot Springs, Temescal Canyon. |
| Davidson's saltscale | <i>Atriplex serenana</i> var. <i>davidsonii</i> | Not conserved, Salt Creek and San Jacinto River. |
| Engelmann oak | <i>Quercus engelmannii</i> | Not conserved, Gavilan Hills, and surrounding Santa Rosa Plateau. |
| Fish's milkwort | <i>Polygala cornuta</i> var. <i>fishiae</i> | Not conserved, Temecula Canyon and Cole Canyon. |
| graceful tarplant | <i>Holocarpha virgata ssp. elongata</i> | Not conserved, Cherry St. (Temecula) and Poly Butte. |
| Hall's monardella | <i>Monardella macrantha ssp. hallii</i> | Yes, habitat captured within Cahuilla Mountain. |
| heart-leaved pitcher sage | <i>Lepechinia cardiophylla</i> | Not conserved, Alberhill and Lake Elsinore. |
| intermediate mariposa lily | <i>Calochortus weedii</i> var. <i>intermedius</i> | Not conserved, Crown Valley and west of Vail Lake also NW of Santa Rosa Plateau Preserve. |
| Jaeger's milk-vetch | <i>Astragalus pachypus</i> var. <i>jaegeri</i> | Not conserved, Vail Lake, Aguanga Valley, Sage, Temecula Canyon, Castile Canyon and the canyon west of Portrero Creek. |
| Johnston's rock cress | <i>Arabis johnstonii</i> | Conserved, depending on 4-forest management plan. |
| lemon lily | <i>Lilium parryi</i> | Conserved, depending on 4-forest management plan. |
| little mouseltail | <i>Myosurus minimus ssp. apus</i> | Not conserved, Salt Creek. |

3.0 Conservation Planning Process/ Description and Area Plan Criteria of the MSHCP Conservation Area



**TABLE 3-22 (Continued)
SUMMARY OF POTENTIAL SPECIES CONSERVATION
UNDER EXISTING RESERVES ALTERNATIVE**

| Common Name | Scientific Name | Notes |
|--------------------------|---|--|
| long-spined spine flower | <i>Chorizanthe polygonoides</i> <i>var. longispina</i> | Not conserved, key population surrounding Vail Lake or population surrounding Lake Mathews. |
| many-stemmed dudleya | <i>Dudleya multicaulis</i> | Not conserved, Key population at Temescal Valley and Gavilan Hills. |
| Mojave tarplant | <i>Deinandra mohavensis</i> | Conserved, all known populations in National Forest. |
| Munz's mariposa lily | <i>Calochortus palmeri</i> <i>var. munzii</i> | Conserved, depending on 4-forest management plan. |
| ocellated Humboldt lily | <i>Lilium humboldtii</i> <i>ssp. ocellatum</i> | Conserved, depending on 4-forest management plan. |
| Orcutt's brodiaea | <i>Brodiaea orcuttii</i> | Conserved, key population on Santa Rosa Plateau Preserve. |
| Palmer's grapplinghook | <i>Harpagonella palmeri</i> | Not conserved, Lake Skinner, Vail Lake, Hartford Springs Park, Temescal Canyon, Paloma Valley, Good Hope, Reche Canyon, Alberhill and Elsinore Peak. |
| Palomar monkeyflower | <i>Mimulus diffusus</i> | Not conserved, French Valley, Good Hope, Reche Canyon, Alberhill |
| Parish's brittlescale | <i>Atriplex parishii</i> | Not conserved, Salt Creek and Winchester Valley. |
| Parry's spine flower | <i>Chorizanthe parryi</i> <i>var. parryi</i> | Not conserved, Aguanga, Anza Valley, Hartford Springs Park, Cactus Valley, Gavilan Peak, Rawson Canyon, Lakeview Mountains, Reche Canyon Summit, Banning, Crown Valley, Estelle Mountain, Vail Lake, Valle Vista, Frogback Hills, and Gilman Hot Springs Road. |
| Payson's jewelflower | <i>Caulanthus simulans</i> | Not conserved, Anza Valley, Sage, Aguanga, Black Hills, French Valley, Portola Road, Lake Elsinore, Meadow Brook, Wildomar, Beaumont, Banning, Beaumont, Moreno Valley, Lakeview Mountains. |
| peninsular spine flower | <i>Chorizanthe leptotheca</i> | Not conserved, Temecula Canyon, Temescal River Valley, Gavilan Plateau, Hemet, Kolb Creek, Vail Lake, Good Hope, and Valle Vista. |
| Plummer's mariposa lily | <i>Calochortus plummerae</i> | Not conserved, Cali Mesa, Badlands, Banning Canyon all of which contain older populations that should be verified. |
| prostrate navarretia | <i>Navarretia prostrate</i> | |
| prostrate spine flower | <i>Chorizanthe procumbens</i> | Not conserved, but need to verify reports from Sedco Hills, Moreno Valley and Anza; also reported from winchester. |

3.0 Conservation Planning Process/ Description and Area Plan Criteria of the MSHCP Conservation Area



**TABLE 3-22 (Continued)
SUMMARY OF POTENTIAL SPECIES CONSERVATION
UNDER EXISTING RESERVES ALTERNATIVE**

| Common Name | Scientific Name | Notes |
|--------------------------------|---|--|
| Rainbow manzanita | <i>Arctostaphylos rainbowensis</i> | Not conserved, Gavilan Mountain, Temecula, Wildomar, Margarita Peak and Pechanga areas. |
| San Jacinto Mountains bedstraw | <i>Galium angustifolium ssp. jacinticum</i> | Conserved, depending on 4-forest management plan. |
| San Miguel savory | <i>Satureja chandleri</i> | Conserved, depending on 4-forest management plan. |
| shaggy-haired alumroot | <i>Huechera hirsutissima</i> | Conserved, depending on 4-forest management plan. |
| small-flowered microseris | <i>Microseris douglasii var. platycharpha</i> | Not conserved, Alberhill, Lake Mathews, Paloma Valley, Vail Lake, and Lake Skinner. |
| small-flowered morning glory | <i>Convolvulus simulans</i> | Not conserved, Vail Lake, Temescal Canyon, Lake Skinner, Little Valley, Murrieta, Paloma Valley, Tres Cerritos Hills, Salt Creek, San Jacinto River. |
| smooth tarplant | <i>Centromadia pungens ssp. laevis</i> | Not conserved, San Jacinto River, Salt Creek, Tres Cerritos Hills, Temecula Creek. |
| sticky-leaved dudleya | <i>Dudleya viscida</i> | Conserved, depending on 4-forest management plan. |
| vernal barley | <i>Hordeum intercedens</i> | Not conserved, San Jacinto River and Salt Creek. |
| Wright's trichocoronis | <i>Trichocoronis wrightii var. wrightii</i> | Not conserved, San Jacinto River. |

3.4.4 No Project/No MSHCP Alternative

Under the No Project Alternative, subregional permits pursuant to the following state and federal regulations would not be issued: 1) Section 10(a)(1)(B) under the Federal Endangered Species Act; and 2) Section 2835 of the NCCP Act (California Fish and Game Code). Activities involving Take of state and/or federal listed species would require individual permitting on a project-by-project basis, as is currently the case.

Land use changes and policies that are being contemplated to implement the MSHCP would not occur. However, planning currently being conducted under the RCIP for the General Plan and county-wide circulation element could still be adopted. Implementation of the various elements of those plans resulting in Take of listed species and regulated Habitats; however, would need to be permitted separately under