

# SECTION A

## MSHCP CONSERVATION AREA DESCRIPTION

### 1.0 INTRODUCTION

This document presents a description of the MSHCP Conservation Area expected to be assembled over time based on the Criteria and assurances incorporated in the MSHCP. *Exhibit 1* depicts the overall MSHCP Conservation Area Criteria Area boundaries within the Plan Area; *i.e.*, the MSHCP Plan map. Four categories of MSHCP Conservation Area planning, land use, and land ownership are depicted in the legend of the Plan map and are described below.

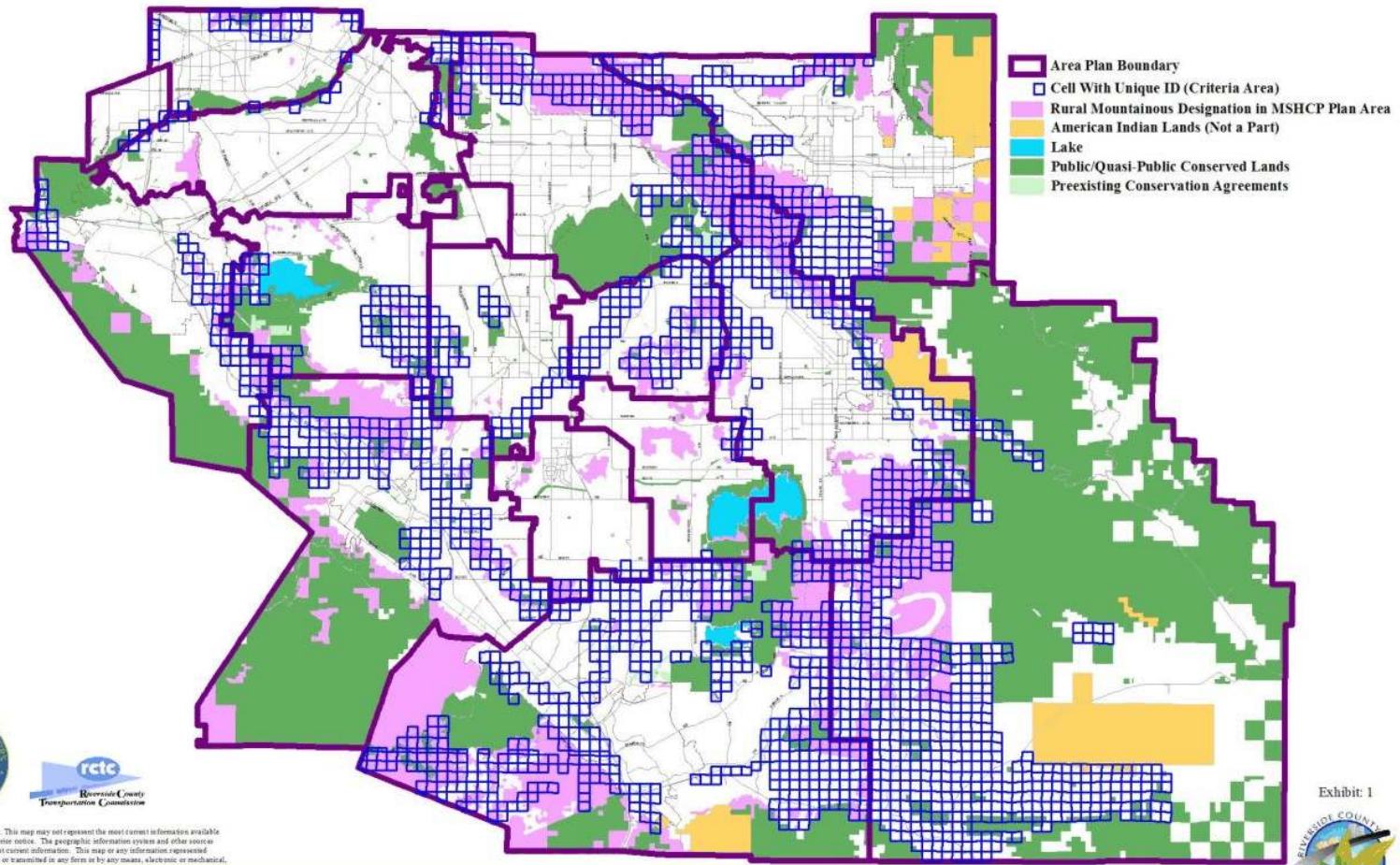
**Criteria Area:** This represents the area within which MSHCP Criteria will be applied and from which approximately 153,000 acres of new Conservation will be achieved to contribute toward assembly of the overall MSHCP Conservation Area. Conservation Criteria have been developed for individual 160-acre U.S. Geological Survey (USGS) map quarter section Cells (*i.e.*, areas legally defined by section, township and range) or Cell Groupings.

**Public/Quasi-Public Lands:** Under this category, existing known Public/Quasi-Public Lands that will be the foundation of the MSHCP Conservation Area are depicted. It is assumed that these lands will be managed for their biological resources, including Vegetation Communities, Habitats and species. Approximately 347,000 acres of Conservation are anticipated on these lands.

**Rural/Mountainous Designation:** The Rural/Mountainous Land Use designation is incorporated in the County General Plan. These lands generally are characterized by steep slopes that represent intrinsic constraints to Development. While the MSHCP Conservation Area assembly is not expected to occur in the Rural/Mountainous designation outside of the Criteria Area, it is expected that existing and future land use practices in these areas provide some additional Conservation value along the edge of the MSHCP Conservation Area and for Habitat connectivity.

**Indian Lands:** Indian Lands are depicted on the MSHCP Plan map for reference only. No Conservation is assumed on these lands.

# A. MSHCP Conservation Area Description



This map is a draft document. This map may not represent the most current information available and may be revised without prior notice. The geographic information system and other sources should be queried for the most current information. This map or any information represented on it, shall not be reproduced or transmitted in any form or by any means, electronic or mechanical, including photo copying and recording.



November 2002  
FILED UNDER THE PUBLIC INFORMATION ACT

MSHCP Plan Map

Exhibit 1



IIA-2