


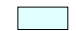




3.5.6 Major Utility Corridors

The major conveyance lines for water, natural gas, and electricity transmission systems form a substantial network of corridors crossing Riverside County. These major utility transmission lines are shown in Figure 3.5.3. The locations of these transmission lines were obtained from information and maps provided by the Metropolitan Water District (MWD) of Southern California and the State of California Energy Commission. There is a concentration of major water, gas, and electrical utility corridors along I-10 through the desert and San Geronio Pass. Additional corridors are created along the routes of the other major utility transmission lines as shown in Figure 3.5.3.




Major Water Pipelines and Aqueducts

Major water conveyance systems consist of the Colorado River Aqueduct operated by the MWD of Southern California, the California Aqueduct operated by the State Department of Water Resources (DWR), and water distribution lines operated by MWD.

Jurisdictional and Infrastructure

-  Rivers, Channels, and Ephemeral Waterways
-  Water Bodies
-  City Boundaries
-  Highways
-  Major Roads
-  MSHCP Boundary

Utilities

-  Major Channels
-  Major Transmission Lines
-  Major Pipelines

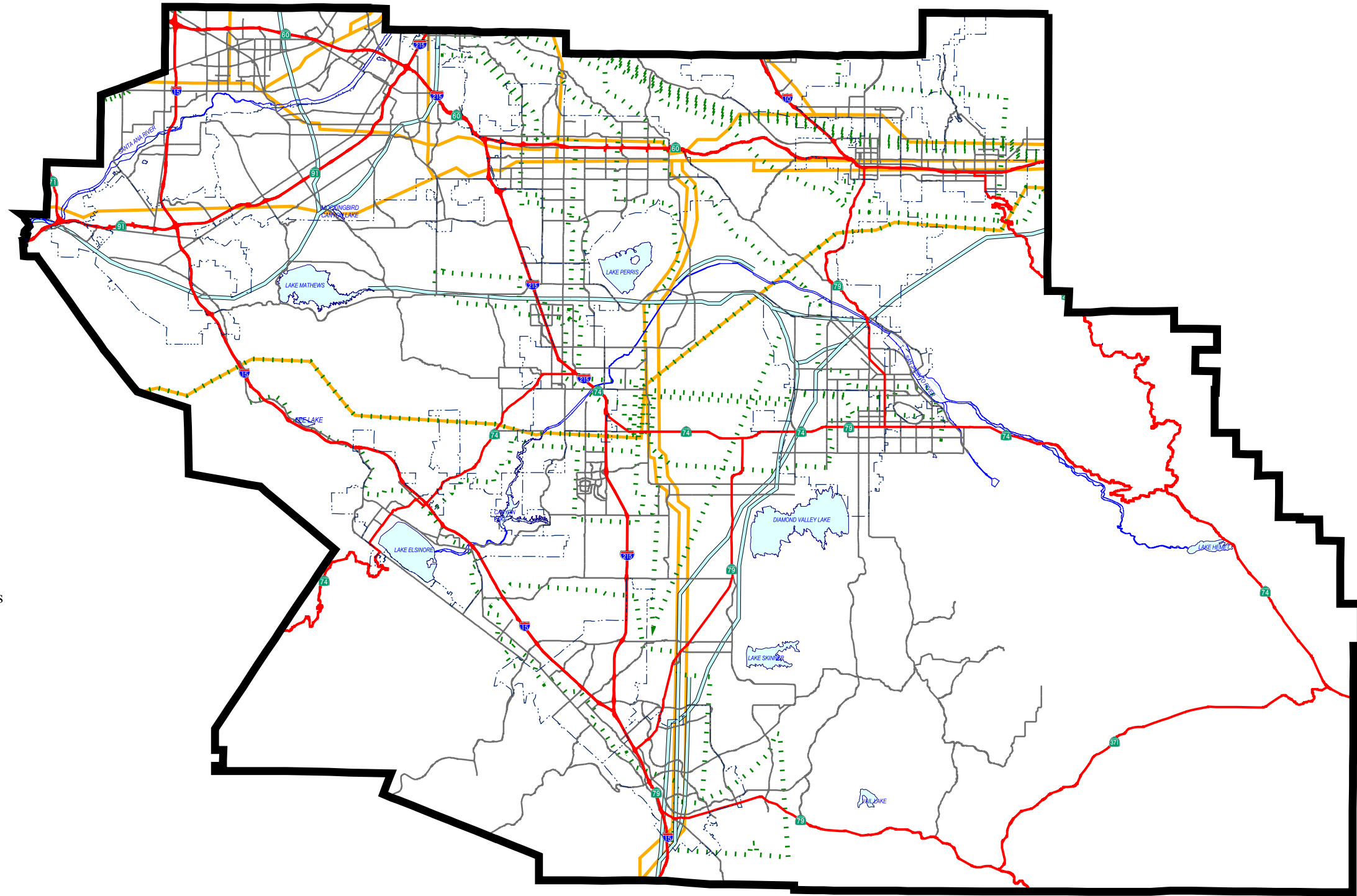


Figure 3.5.3

SOURCE: COUNTY OF RIVERSIDE EXISTING SETTING REPORT, 2000.



1 0 1 2 3 Miles

UTILITIES



This Page Intentionally Left Blank

The starting point of the Colorado River Aqueduct is in San Bernardino County. The aqueduct extends north-south as it enters Riverside County near the intersection of SR-62 and SR-177 and continues southerly towards Desert Center. The Colorado River Aqueduct generally follows I-10 east-west across the County from Desert Center to the San Gorgonio pass near Cabazon. At that point, the aqueduct veers to the south of I-10 and extends towards San Jacinto before terminating at Lake Mathews. Part of California's State Water Project (SWP), the California Aqueduct terminates in Riverside County at Lake Perris. Lake Perris is the southernmost storage location within the SWP.

Figure 3.5.3 also shows the major water distribution system lines in Riverside County operated by MWD. These lines are the primary water transmission pipelines conveying water from storage locations to the eventual end user.

Major Natural Gas Pipelines

Most of the major natural gas transmission pipelines in Riverside County are operated by the Gas Company. As shown in Figure 3.5.3, the Gas Company operates three major pipelines extending east to west through Riverside County. These main pipelines follow I-10 through most of the county. Dual pipelines branch off these main lines near Desert Center and extend southward into Imperial County and another set of dual lines branch off the main pipelines near Gilman Springs Road at SR-60 and extend southward into San Diego County. Near the I-215 interchange, one pipeline veers to the south and extends west across the county following SR-91. Another veers to the north and follows I-215 before extending west across the County through the City of Riverside and Pedley. Additional Gas Company pipelines extend north-south in the western portion of Riverside County, providing system connectivity to west San Bernardino Valley and the upper desert region in San Bernardino County as shown in Figure 3.5.3.

Near Desert Center, an additional natural gas transmission line extends northward from the main pipelines following the I-10 corridor. This pipeline follows Kaiser Road before terminating near Eagle Mountain. A separate pipeline operated by Imperial Irrigation District extends north from MWD's Eagle Mountain water pumping plant and terminates near the intersection of SR-62 and SR-177.

Major Electrical Transmission Lines

Major electricity transmission lines in Riverside County are operated by Southern California Edison (SCE) and Imperial Irrigation District. Major electricity transmission lines are those that carry a minimum of 220 kilovolts (kV) of power, and are shown in Figure 3.5.3.

SCE operates a 500 kV transmission line extending east-west through most of Riverside County. The 500 kV line follows the I-10 corridor from the Arizona border west to the San Gorgonio pass area, veers south of I-10 towards Perris, and then extends west from Perris into Orange County. From the San Gorgonio Pass

area, multiple 220 kV lines veer north of I-10 and follow San Timoteo Canyon into Redlands in San Bernardino County. Portions of SCE's 220 kV transmission lines pass through the northwest corner of Riverside County.

MWD operates a 220 kV transmission line extending from its Hinds water pumping plant located along I-10 west of Desert Center to its Iron Mountain pumping plant located in San Bernardino County north of the intersection of SR-62 and SR-177.