



## **Agriculture & Dairy Industry**

The Eastvale area and the surrounding Chino Valley are known primarily as agricultural regions. Located throughout Eastvale, dairies are the predominant agricultural use, though ranches and row crops are also found here. However, with the encroachment of residential uses and on-going development pressures, the character of Eastvale is clearly changing from an agricultural to a more urban community. Increasing pressure is being felt by the dairy industry to relocate to areas with less urbanization activity.

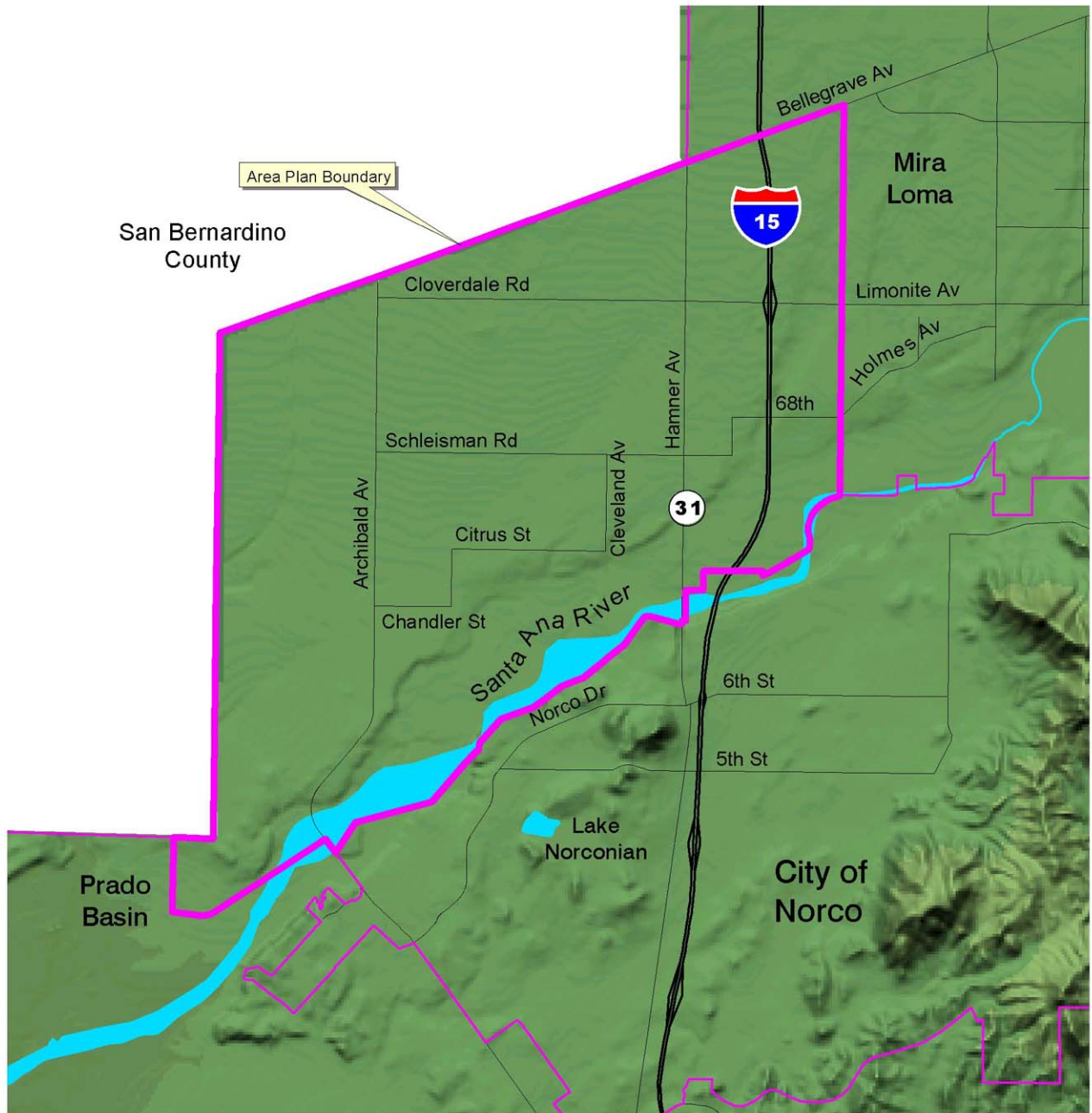


Figure 2



# County of Riverside General Plan - *Hearing Draft*

---

*Eastvale Area Plan*

*This page intentionally left blank.*