



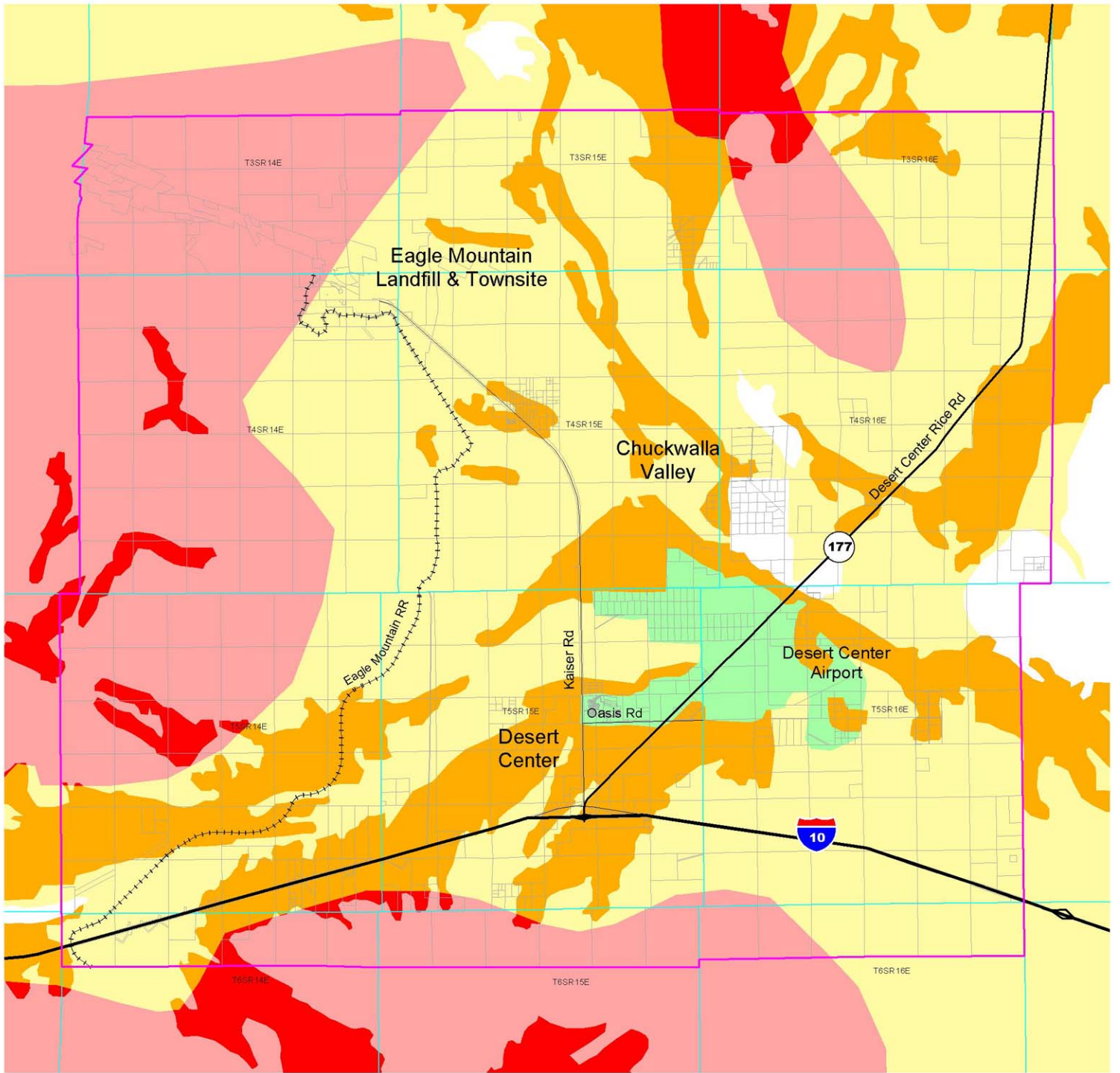
Slope

The Chuckwalla, Eagle, and Coxcomb Mountains play an integral part in establishing the character and atmosphere of Desert Center. While densities are limited in the Open Space-Rural land use designation, development that does occur must minimize erosion and landslides, preserve significant views, and minimize grading and scarring. The following policies are intended to protect life and property while maintaining the natural character of this area. Figure 11, Steep Slope, reveals the slope percentages for Desert Center. Also refer to Figure 12, Slope Instability, for areas of possible landslide.

Policies:



DCAP 13.1 Protect life and property, and maintain the character of Desert Center through adherence to the Hillside Development and Slope section of the General Plan Land Use Element, the Mountainous and Open Space Land Use Designations, and the Slope and Soil Instability Hazards section of the General Plan Safety Element.



Wildfire Zones

- Very High
- High
- Moderate
- Low
- Very Low
- None

Source Information: Earth Consultants International.
The oldest data shown on this map is 1990.

This map is a draft document only and has yet to be verified by the County of Riverside or their representatives. This map may not represent the most current information available and may be revised without prior notice. The geographic information system and other sources should be queried for the most current information. This map or any information represented on it, shall not be reproduced or transmitted in any form or by any means, electronic or mechanical, including photo copying and recording.

Figure 9



**DESERT CENTER AREA PLAN
WILDFIRE SUSCEPTIBILITY**

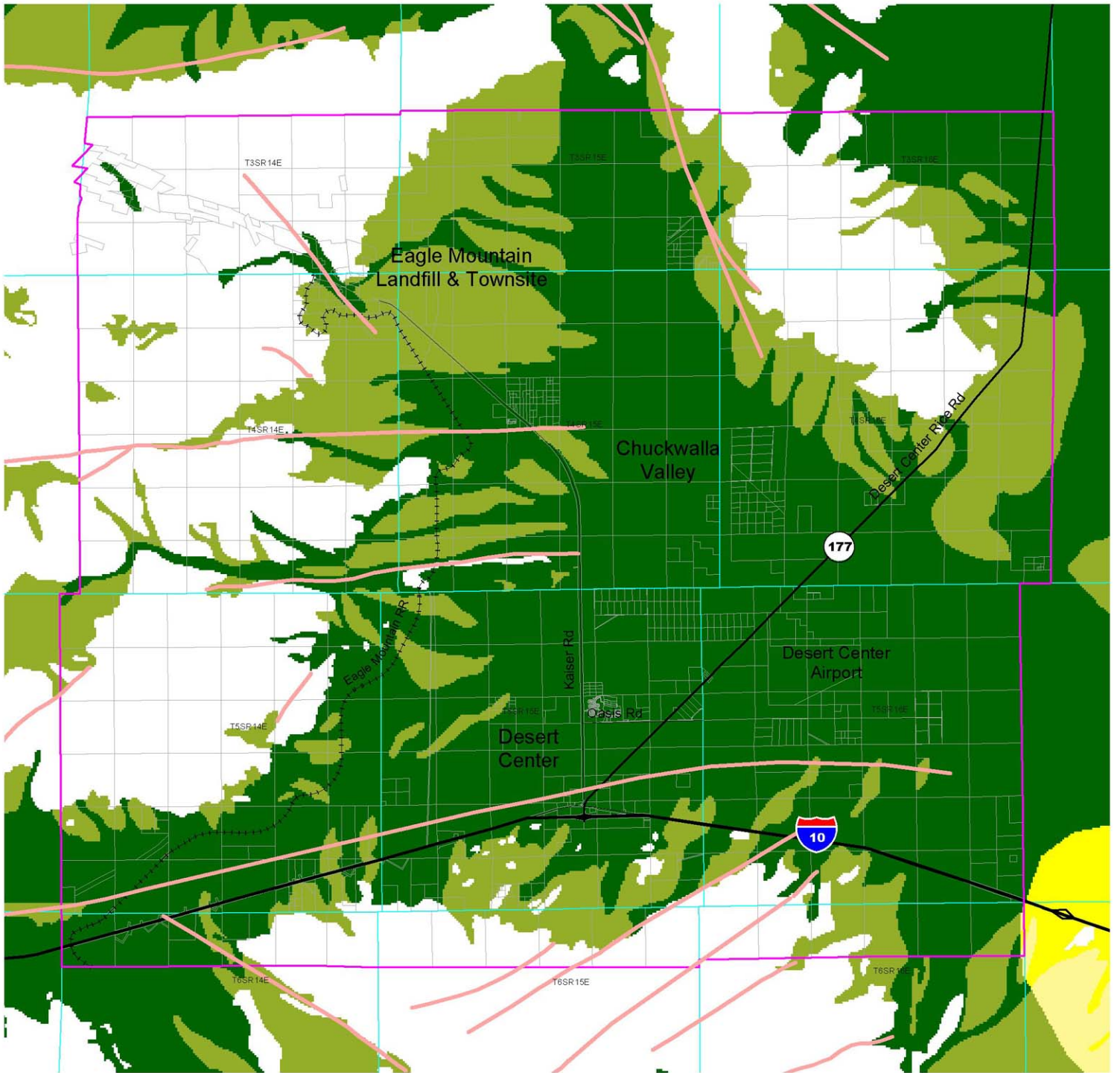




County of Riverside General Plan - *Hearing Draft*

Desert Center Area Plan

This page intentionally left blank.



Liquefaction Susceptibility

Shallow Groundwater
Susceptible Sediments

- Very High
- High
- Moderate
- Low
- Very Low

Deep Groundwater
Susceptible Sediments

- Moderate
- Low
- Very Low

No Groundwater Data
Susceptible Sediments

- Moderate
- Low
- Very Low

Faults

Faults



0' 15,000'

**DESERT CENTER AREA PLAN
SEISMIC HAZARDS**

Source Information: Earth Consultants International.
The oldest data shown on this map is 1990.

This map is a draft document only and has yet to be verified by the County of Riverside or their representatives. This map may not represent the most current information available and may be revised without prior notice. The geographic information system and other sources should be queried for the most current information. This map or any information represented on it, shall not be reproduced or transmitted in any form or by any means, electronic or mechanical, including photo copying and recording.

Figure 10

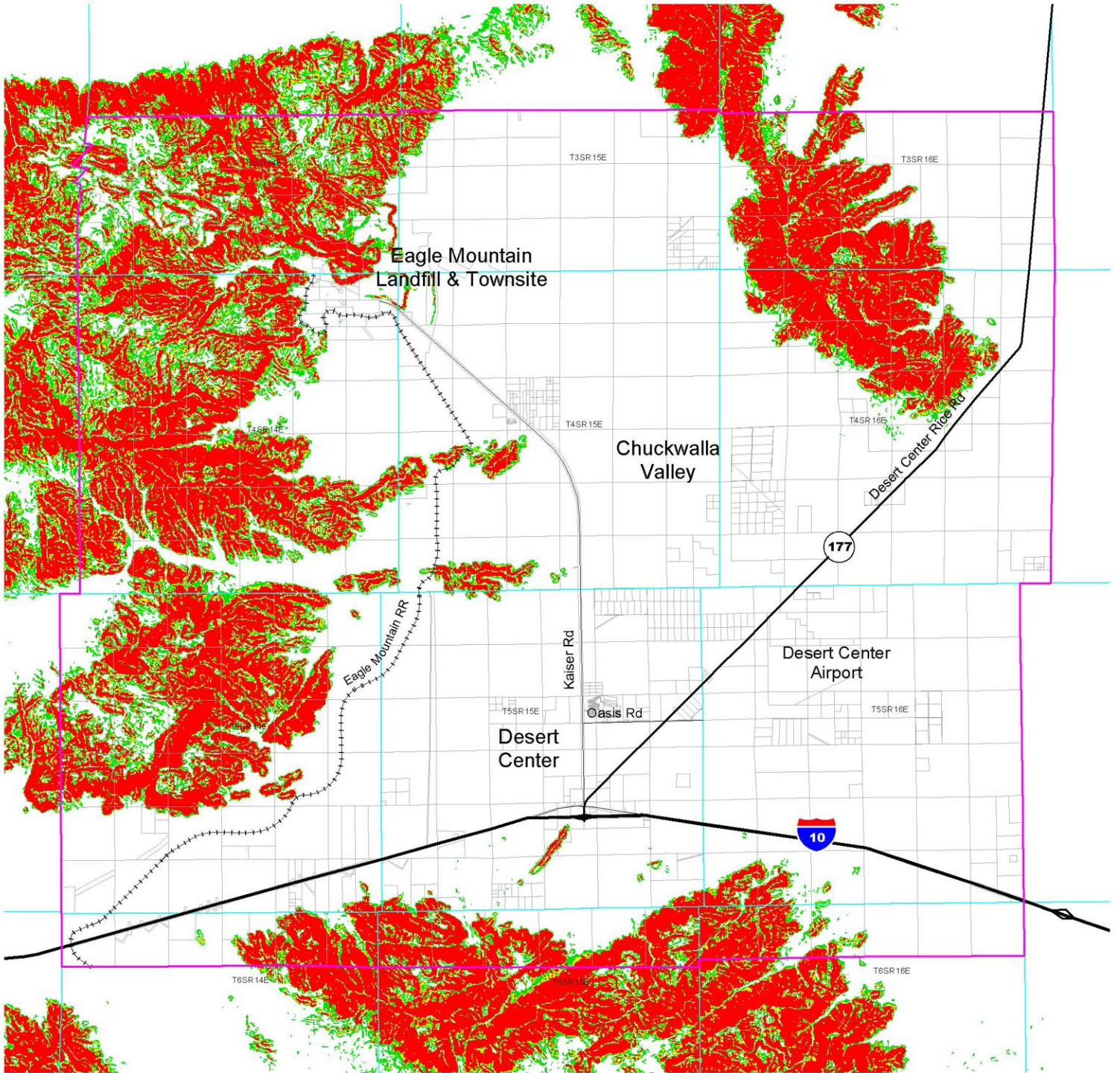




County of Riverside General Plan - *Hearing Draft*

Desert Center Area Plan

This page intentionally left blank.



Slope Angle

- Less than 15%
- 15 - 25%
- 25 - 30%
- 30% and Greater

*Source Information: Earth Consultants International.
The oldest data shown on this map is 1990.
NOTE: The slopes on this map are general and more detailed studies may override the map without a general plan amendment.*

This map is a draft document only and has yet to be verified by the County of Riverside or their representatives. This map may not represent the most current information available and may be revised without prior notice. The geographic information system and other sources should be queried for the most current information. This map or any information represented on it, shall not be reproduced or transmitted in any form or by any means, electronic or mechanical, including photo copying and recording.

Figure 11



**DESERT CENTER AREA PLAN
STEEP SLOPE**

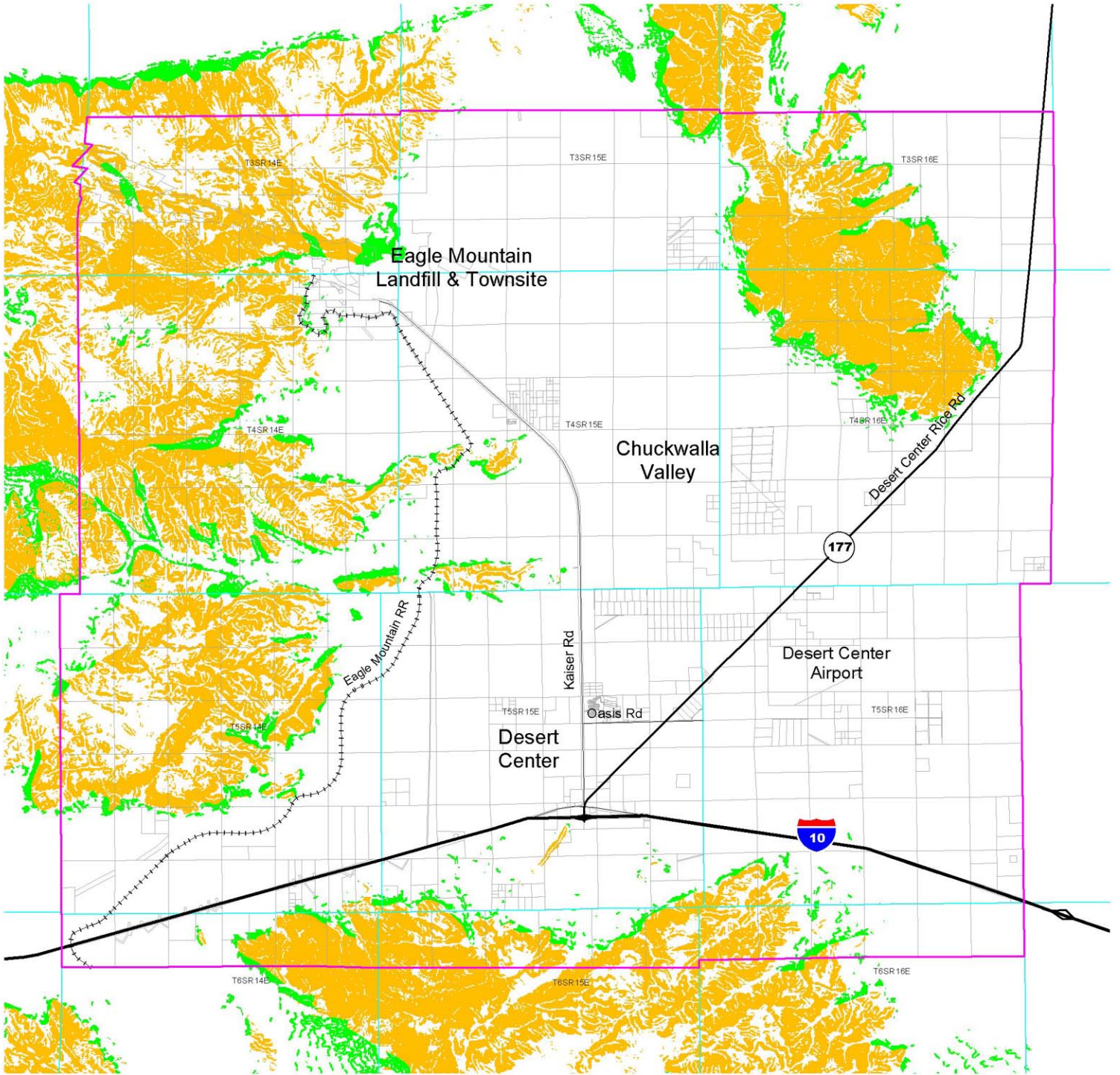




County of Riverside General Plan - *Hearing Draft*

Desert Center Area Plan

This page intentionally left blank.



- Existing Landslides
- High susceptibility to seismically induced landslides and rockfalls.
- Low to locally moderate susceptibility to seismically induced landslides and rockfalls.

Source Information: Earth Consultants International.
The oldest data shown on this map is 1990.

This map is a draft document only and has yet to be verified by the County of Riverside or their representatives. This map may not represent the most current information available and may be revised without prior notice. The geographic information system and other sources should be queried for the most current information. This map or any information represented on it, shall not be reproduced or transmitted in any form or by any means, electronic or mechanical, including photo copying and recording.



DESERT CENTER AREA PLAN SLOPE INSTABILITY

Figure 12





County of Riverside General Plan - *Hearing Draft*

Desert Center Area Plan

This page intentionally left blank.