



## *Multipurpose Open Space*

As described in earlier sections, the Eastern Coachella Valley contains a variety of open spaces that serve a multitude of functions. Open space areas within the Valley include the Joshua Tree National Park, the Santa Rosa Mountains, the Mecca Hills, the Dos Palmas Reserve, the Salt Creek Area of Critical Environmental Concern, the Painted Canyon, the Whitewater River, and the Salton Sea. These open spaces encompass a variety of habitats. There are also a number of recreation areas within the Eastern Coachella Valley in which many of these resources can be enjoyed. This Multipurpose Open Space section is a critical component in preserving the character of the County of Riverside and the Valley. Providing a scenic background and preserving the natural character of the Eastern Coachella Valley, these open spaces also help define the edges of, and separations between, communities.

## **LOCAL OPEN SPACE POLICIES**

### **Habitat Conservation/MSHCP**

With its rich and varied landscape, the Eastern Coachella Valley accommodates several ecological habitats that are home to numerous flora and fauna. Preserving habitat not only aids in sustaining species' survival, but also maintains the quality of life in the Valley.

The Coachella Valley Association of Governments is preparing, on behalf of its member agencies, a proposed Multiple Species Habitat Conservation Plan which is intended to cover 28 species of plants and animals in the Coachella Valley. Currently, this plan proposes to conserve between 200,000 and 250,000 acres of privately owned land through general plan land use designations, zoning/development standards, and an aggressive acquisition program for a total conservation area of between 700,000 and 750,000 acres. Figure 8, Coachella Valley Association of Governments Multi-Species Habitat Conservation Plan, delineates that portion of the MSHCP that lies within the Eastern Coachella Valley Area Plan.

#### **Policies:**



ECVAP 14.1      Protect visual and biological resources in the Eastern Coachella Valley Area Plan through adherence to General Plan policies found in the Fish and Wildlife Habitat section of the Multipurpose Open Space Element, as well as policies contained in the Coachella Valley Multiple Species Habitat Conservation Plan.

### **Ridgelines**

The ridgeline of the Santa Rosa Mountains along the western edge of the Eastern Coachella Valley, together with the ridges of the Mecca Hills and Orocopia Mountains in the east, constitute important natural resources within the Area Plan.



# County of Riverside General Plan - *Hearing Draft*

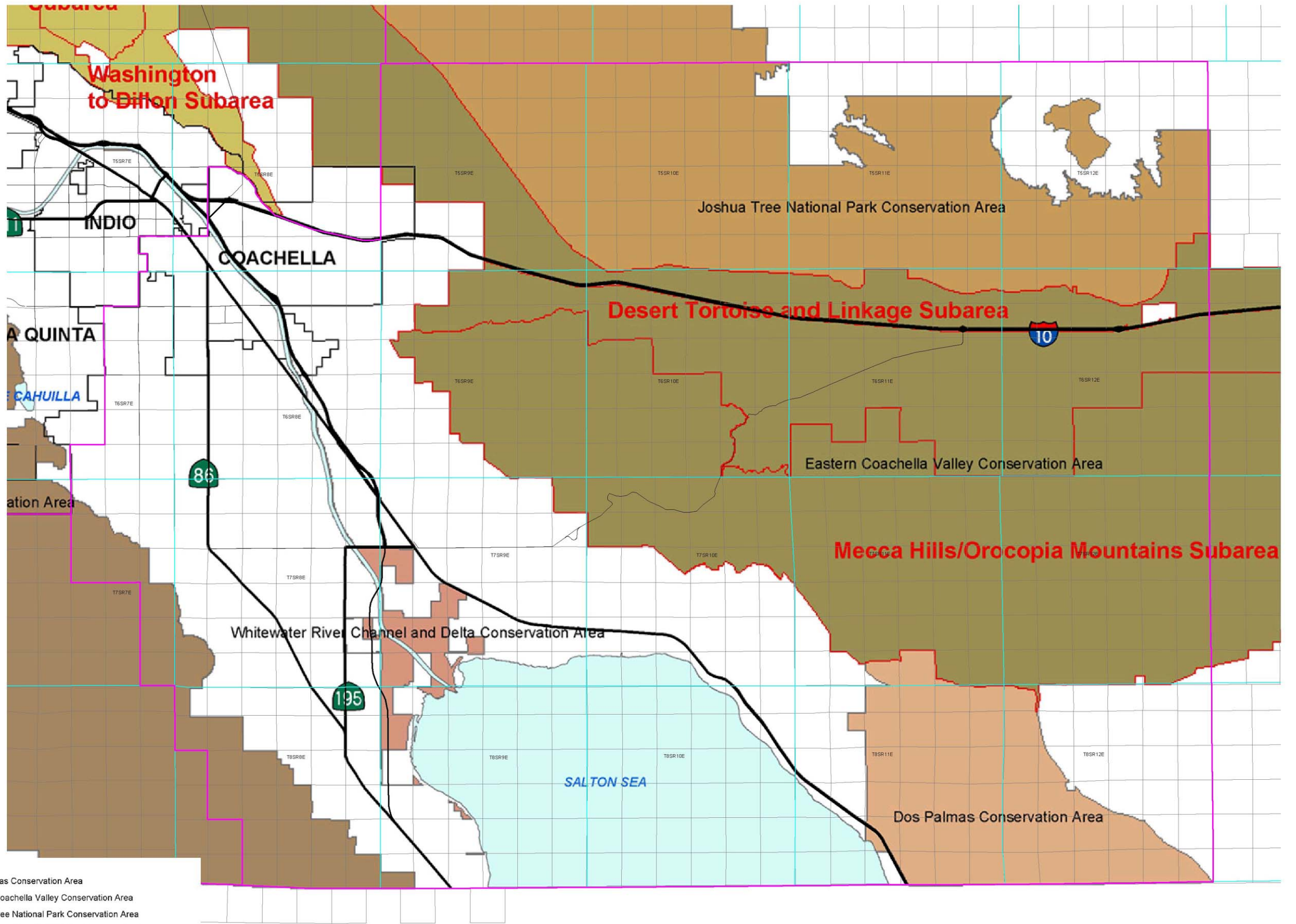
## *Eastern Coachella Valley Area Plan*

---

**Policies:**



ECVAP 15.1 Refer to the Ridgeline policies in the Hillside Development and Slope section of the General Plan Land Use Element, and the Scenic Resources policies in the General Plan Multipurpose Open Space Element.



- Highways
- Waterbodies
- Cities
- Conservation Subareas
- Conservation Areas**
- Caseys June Beetle Conservation Area
- Central Coachella Valley Conservation Area
- Dos Palmas Conservation Area
- Eastern Coachella Valley Conservation Area
- Joshua Tree National Park Conservation Area
- Northwestern Coachella Valley Conservation Area
- Santa Rosa and San Jacinto Mountains Conservation Area
- Western Coachella Valley Conservation Area
- Whitewater River Channel and Delta Conservation Area

The Coachella Valley Association of Governments is preparing, on behalf of its member agencies, a proposed Multiple Species Habitat Conservation Plan which is intended to cover 28 species of plants and animals in the Coachella Valley. Currently, this plan proposes to conserve between 200,000 and 250,000 acres of privately owned land through general plan land use designations, zoning/development standards and an aggressive acquisition program for a total conservation area of between 700,000 and 750,000 acres.

Source Information: C/FAG.  
 The oldest data shown on this map is 1990.  
 This map is a draft document only and has yet to be verified by the County of Riverside or their representatives. This map may not represent the most current information available and may be revised without prior notice. The geographic information system and other sources should be queried for the most current information. This map or any information represented on it shall not be reproduced or transmitted in any form or by any means, electronic or mechanical, including photo copying and recording.

Figure 8



**County of Riverside General Plan - *Hearing Draft***

*Eastern Coachella Valley Area Plan*

---

*This page intentionally left blank.*