



A **Community of Interest (COI)** is a study area designated by LAFCO within unincorporated territory that may be annexed to one or more cities or special districts, incorporated as a new city, or designated as an **Unincorporated Community (UC)** within two years of status obtainment.

Designation of an area as a UC may require removal from a municipal sphere of influence since the two designations are mutually exclusive.

UNIQUE COMMUNITIES

Idyllwild/Pine Cove

This is the largest of the mountain resort areas within REMAP, including single family homes, retail commercial facilities, bed and breakfast accommodations, motels, campgrounds, cultural/educational uses, and mixed use centers. These communities have a cozy village ambiance that makes them especially desirable resort and residential areas. The community's proximity to recreational opportunities and natural open space as well as their remoteness from urbanized areas make them an attractive retirement and vacation destination.

Anza

Anza is a large-lot rural residential community along State Route 371 with commercial services along the highway serving area residents and the traveling public. The community is also served by its own school and post office. Minimal utilities and services are available in the community.

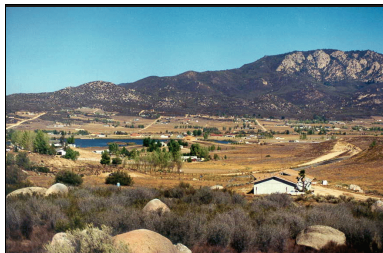


The Anza Valley

Other Rural Communities

Several other small rural communities are scattered throughout REMAP:

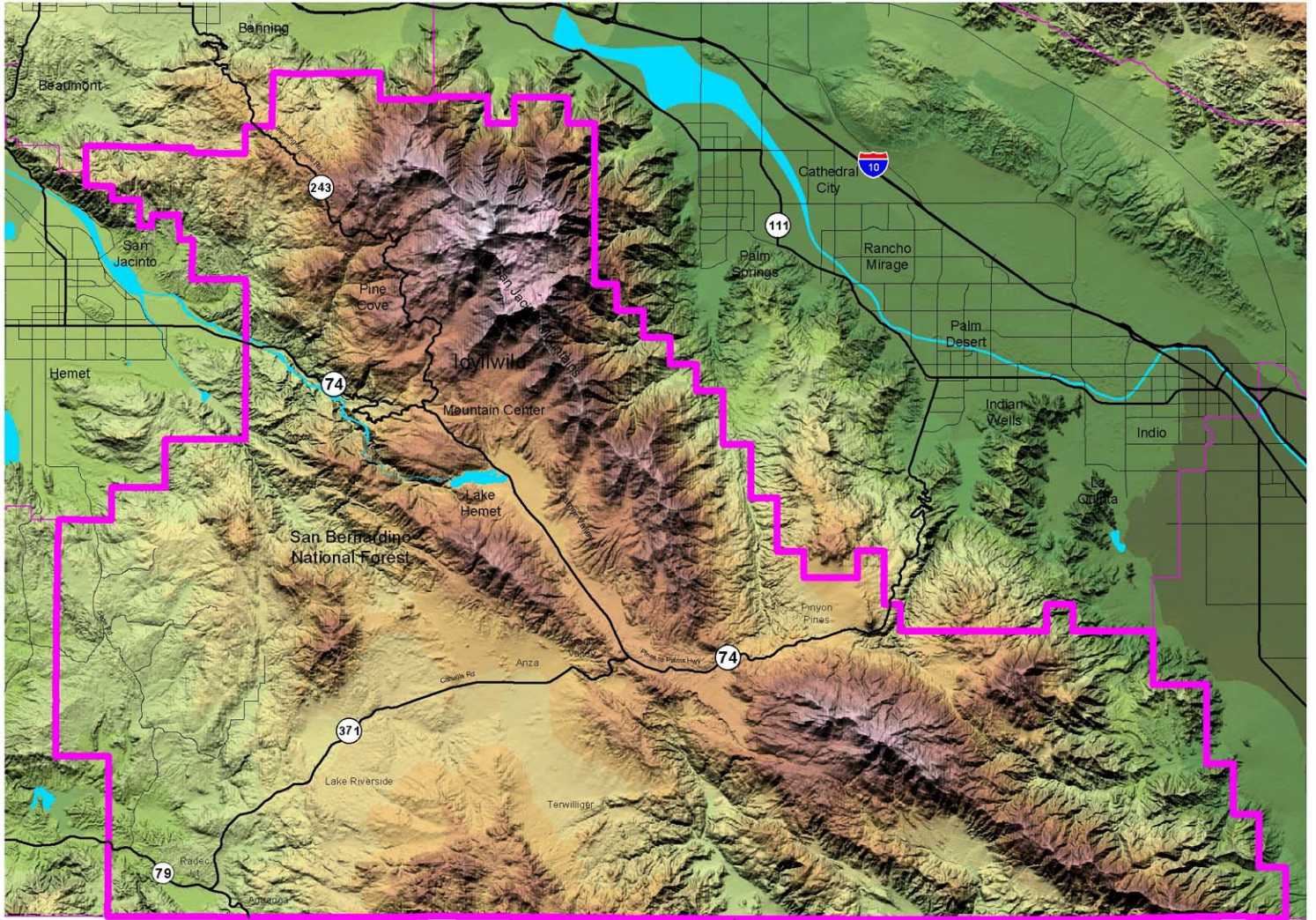
- **Aguanga** is a rural community in the southwest corner of the planning area along State Route 79 and is a gateway between the back country of Riverside and San Diego Counties. A historic post office and general store serve the rural community, which also incorporates a modern RV resort. Limited services and utilities are available in the community;
- **Lake Riverside Estates** is a gated, rural community surrounding Lake Riverside. Lots for the single family homes here range in size from one half to two-and-a-half acres;
- **Sage** is located along the western edge of the planning area, north of Wilson Valley along Route 3;
- **Terwilliger** is located south of Anza and the Cahuilla Indian Reservation;
- **Garner Valley** is east of State Route 74 and southeast of Mountain Center; and
- the **Pinyon Pines** estates are north of State Route 74 near the eastern border of REMAP.



Lake Riverside Estates

Indian Lands

The Cahuilla, Aqua Caliente, Santa Rosa, Ramona, and Morongo Indians have reservations (36,673 acres total) throughout the plan area. Low intensity land uses exist on Indian Lands in this remote region with the exception of the Cahuilla Creek Casino located along Route 371, southwest of Anza.



Area Plan Boundary

Figure 2



County of Riverside General Plan - *Hearing Draft*
Riverside Extended Mountain Area Plan (REMAP)

This page intentionally left blank.