



As shown on Figure 7, Trails and Bikeway System, REMAP contains significant recreational opportunities including riding and hiking trails, parks, playgrounds and natural areas. Among these recreational opportunities is the nationally recognized Pacific Crest Trail. This famous trail spans 2,650 miles from Mexico to Canada through three western states, and meanders through REMAP along a ridge of the San Jacinto Mountains through the National Forest. A comprehensive and integrated trails plan depicting existing and proposed trails as well as places of interest is lacking for this area.

Policies:

REMAP 9.1 Prepare a trails plan for this region which builds on the system depicted in Figure 7, by integrating the existing network of local, state and federal trails and places of interest.



REMAP 9.2 Implement Figure 7, Trails and Bikeway System as discussed in the Non-motorized Transportation section of the General Plan Circulation Element.

Scenic Highways

The scenic beauty of REMAP is often enjoyed while traveling on its highways. Several of these routes within the region have been designated or identified as scenic highways for inclusion in the State Scenic Highways program. Policies pertaining to these routes, regardless of their classification, are intended to protect these valuable resources and manage development along them so that it will not detract from the area's natural character.

As shown on Figure 8, Scenic Highways, two routes have been officially designated as State Scenic Highways:

State Route 74 From the western boundary of the San Bernardino National Forest 47.7 miles east to the junction with State Route 111 in Palm Desert. This route traverses the San Jacinto Mountain Range and affords views of Hemet, Garner Valley, and the Coachella Valley. Several vista points allow the traveler to pause and view the panoramas.

State Route 243 From Mountain Center to the northern boundary of the Area Plan. This road leads the traveler through the rustic hamlets of Idyllwild and Pine Cove. Views of 10,805 ft. San Jacinto Peak and the San Gorgonio Pass are major attractions along this route.

Two segments have been identified as eligible State Scenic Highways:

State Route 79 From the San Diego County line 2 miles to the junction with State Route 371. This route is the terminal segment of Scenic Route 79 in San Diego County.

State Route 74 From the Area Plan boundary west just past the crossing of the San Jacinto River.

One segment has been identified as a County Eligible Scenic Highway:



County of Riverside General Plan - *Hearing Draft*

Riverside Extended Mountain Area Plan (REMAP)

State Route 79 from Aguanga west to the Area Plan boundary has been identified as a route that should be included in the California State Scenic Highway Program, but has yet to be designated as an eligible or official scenic highway. This state route passes horse ranches and affords views of the Palomar Mountain and Observatory.

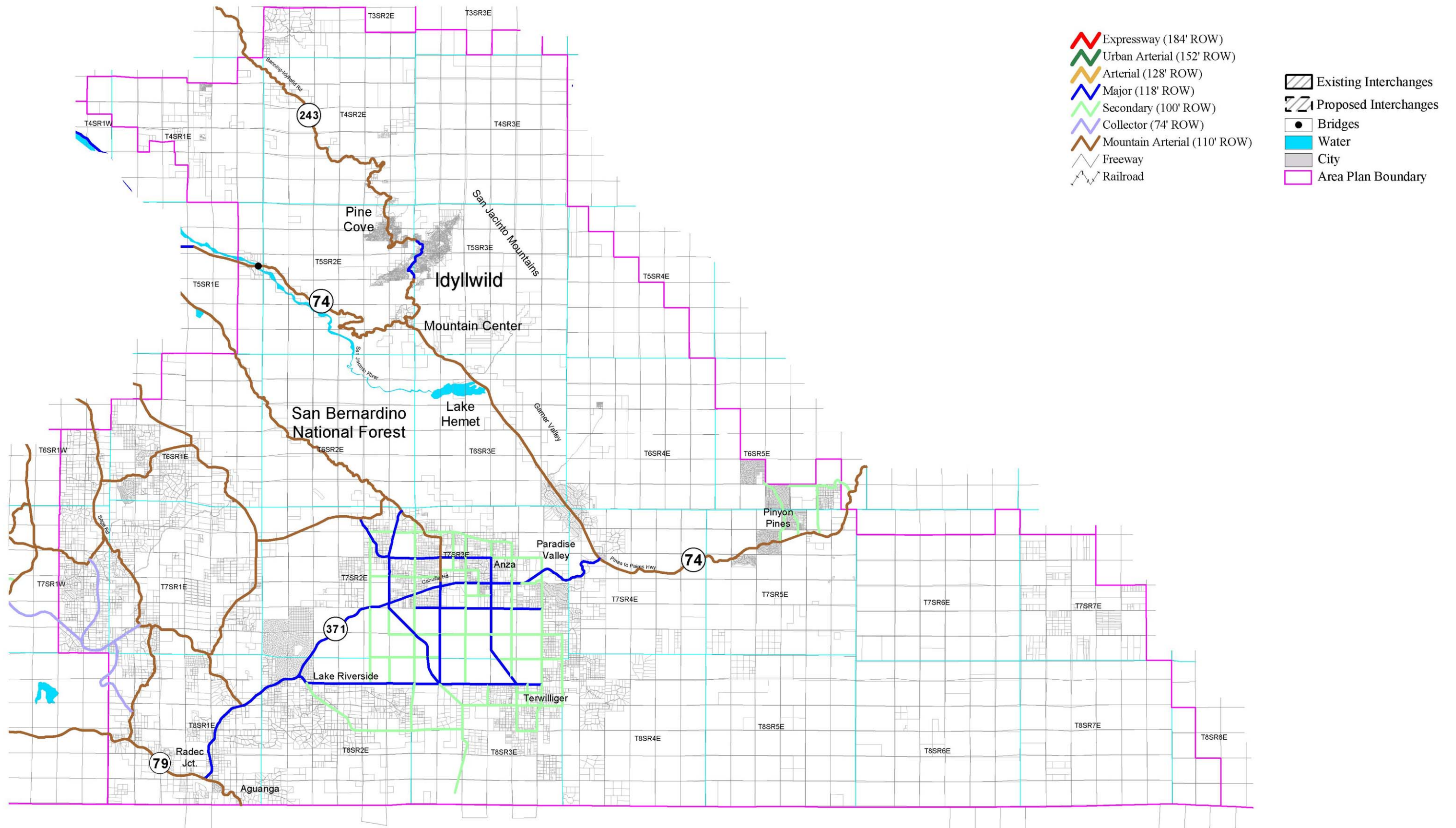
Policies:



- REMAP 10.1 Protect the scenic highways in REMAP from change that would diminish the aesthetic value of adjacent properties through the Scenic Corridors section of the General Plan Land Use, Multipurpose Open Space, and Circulation Elements.

- REMAP 10.2 Obtain designation for State Route 79 as an eligible and subsequently official scenic highway in accordance with the California State Scenic Highway Program.

- REMAP 10.3 Enforce at least a 150 foot setback from the centerline of the scenic highway for new development.



Note: Circulation maps are a graphic representation identifying the general location and classification of existing and proposed thoroughfares in the county. Any questions regarding precise alignment or improvement standards should be referred to the County Transportation Department.

Note: General Plan roadways within cities are shown for reference and to depict system continuity only. Any questions relative to improvement standards within city boundaries must be addressed to the respective city.

Source Information: TransCore.
The oldest data shown on this map is 1990.

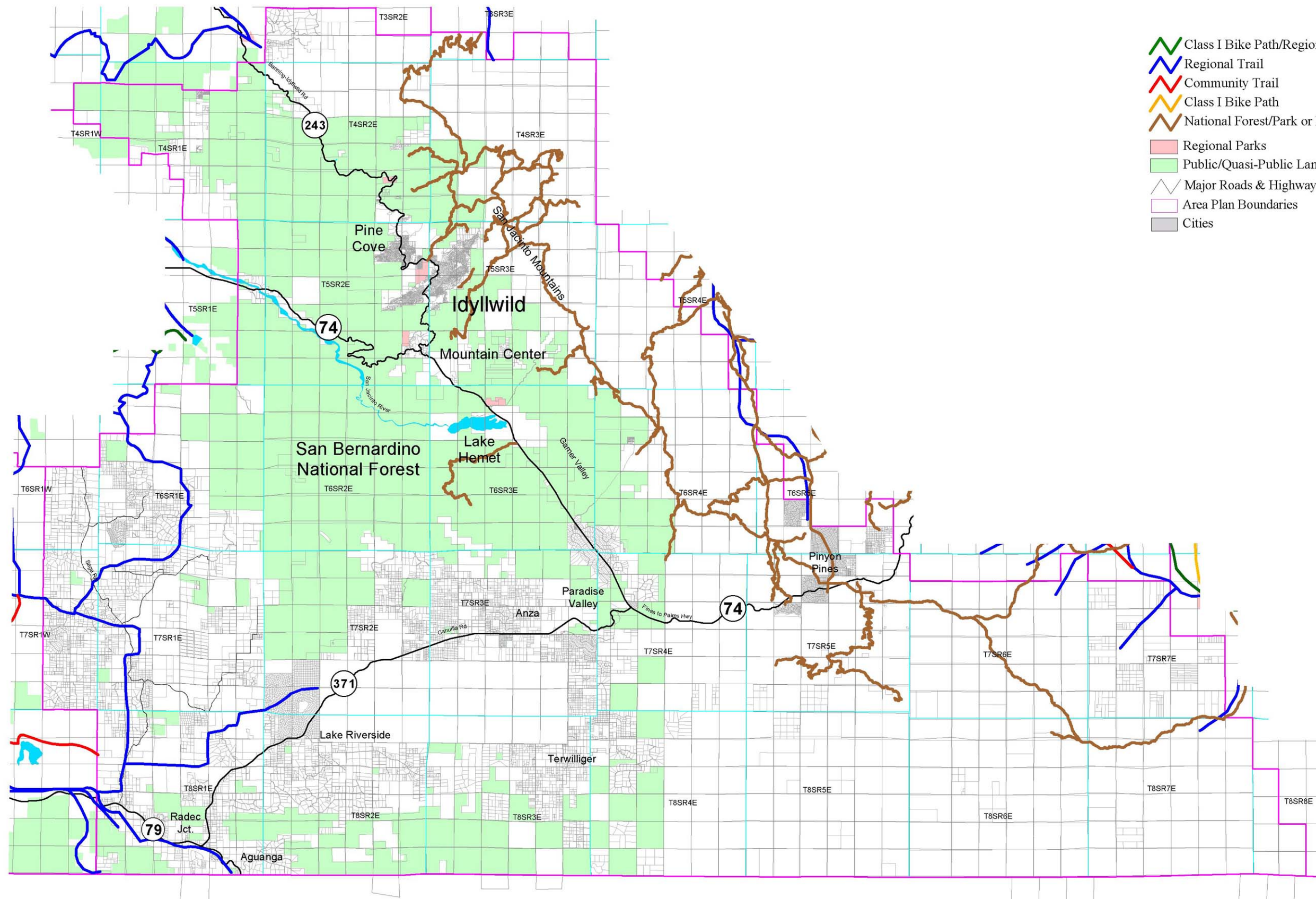
This map is a draft document only and has yet to be reviewed by the county or their representatives. This map may not represent the most current information available and may be revised without prior notice. The geographic information system and other sources should be queried for the most current information. This map or any information represented on it shall not be reproduced or transmitted in any form or by any means, electronic or mechanical, including photocopying and recording.

Figure 6



County of Riverside General Plan - *Hearing Draft*
Riverside Extended Mountain Area Plan (REMAP)

This page intentionally left blank.



- Class I Bike Path/Regional Trail
- Regional Trail
- Community Trail
- Class I Bike Path
- National Forest/Park or BLM Trails (Non-County)
- Regional Parks
- Public/Quasi-Public Lands
- Major Roads & Highways
- Area Plan Boundaries
- Cities

Note: Circulation maps are a graphic representation identifying the general location and classification of existing and proposed thoroughfares in the county. Any questions regarding precise alignment or improvement standards should be referred to the regional park and open space district.

Note: Trail and Bikeway System elements within the cities are shown for reference and to depict system continuity only. Any questions relative to these elements within city boundaries must be addressed to the respective city.

Source Information: VREA Technologies. The oldest data shown on this map is 1990.

This map is a draft document only and has yet to be verified by the County of Riverside or their representatives. This map may not represent the most current information available and may be revised without prior notice. The geographic information system and other sources should be queried for the most current information. This map or any information represented on it shall not be reproduced or transmitted in any form or by any means, electronic or mechanical, including photocopying and recording.

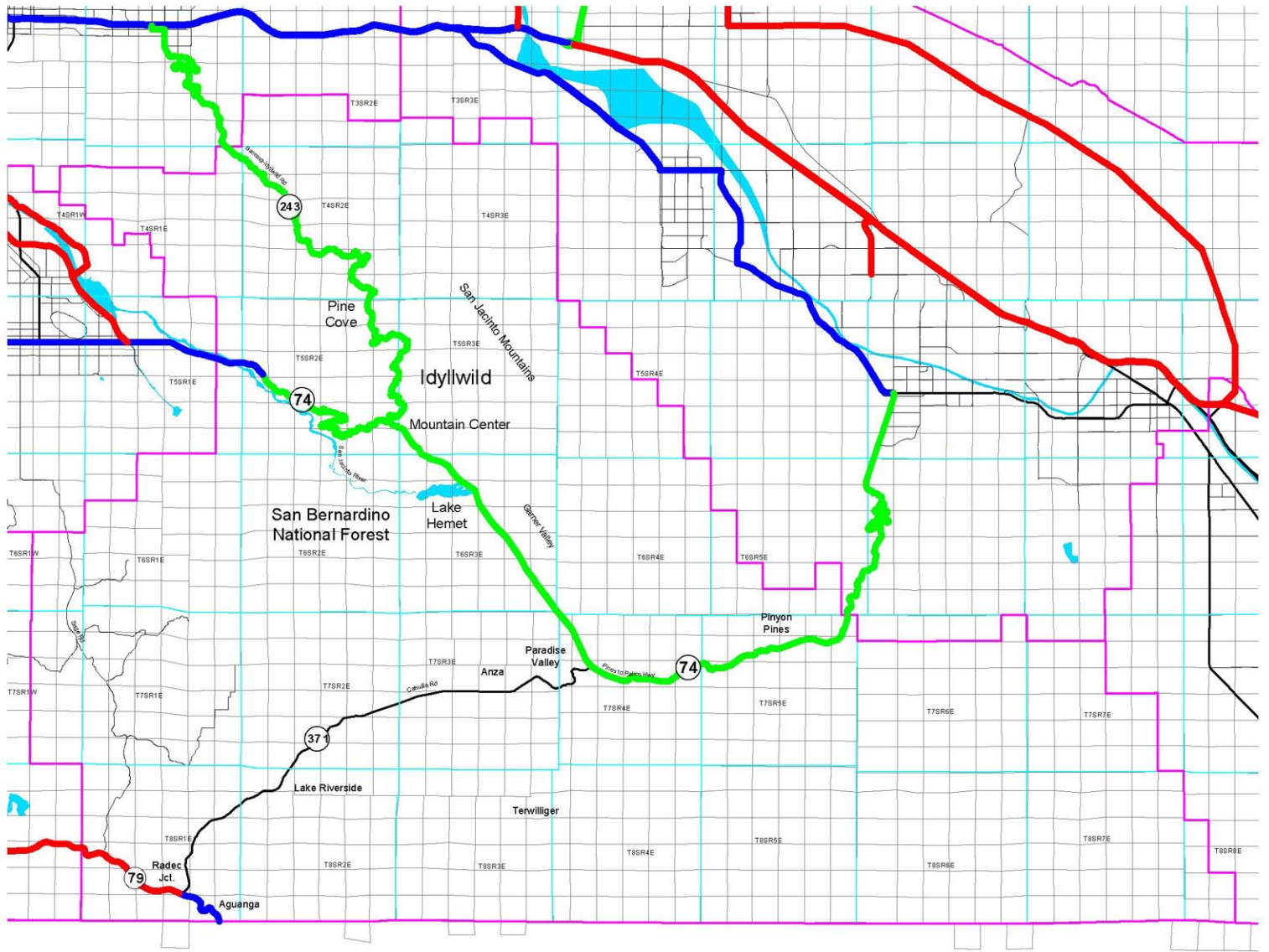
Figure 7



County of Riverside General Plan - *Hearing Draft*

Riverside Extended Mountain Area Plan (REMAP)

This page intentionally left blank.



-  County Eligible
-  State Designated
-  State Eligible
-  Major Roads & Highways
-  Area Plan Boundaries
-  Cities

Source Information: Riverside County.
The oldest data shown on this map is 1990.

This map is a draft document only and has yet to be verified by the County of Riverside or their representatives. This map may not represent the most current information available and may be revised without prior notice. The geographic information system and other sources should be queried for the most current information. This map or any information represented on it, shall not be reproduced or transmitted in any form or by any means, electronic or mechanical, including photo copying and recording.

Figure 8



REMAP SCENIC HIGHWAYS





County of Riverside General Plan - *Hearing Draft*
Riverside Extended Mountain Area Plan (REMAP)

This page intentionally left blank.