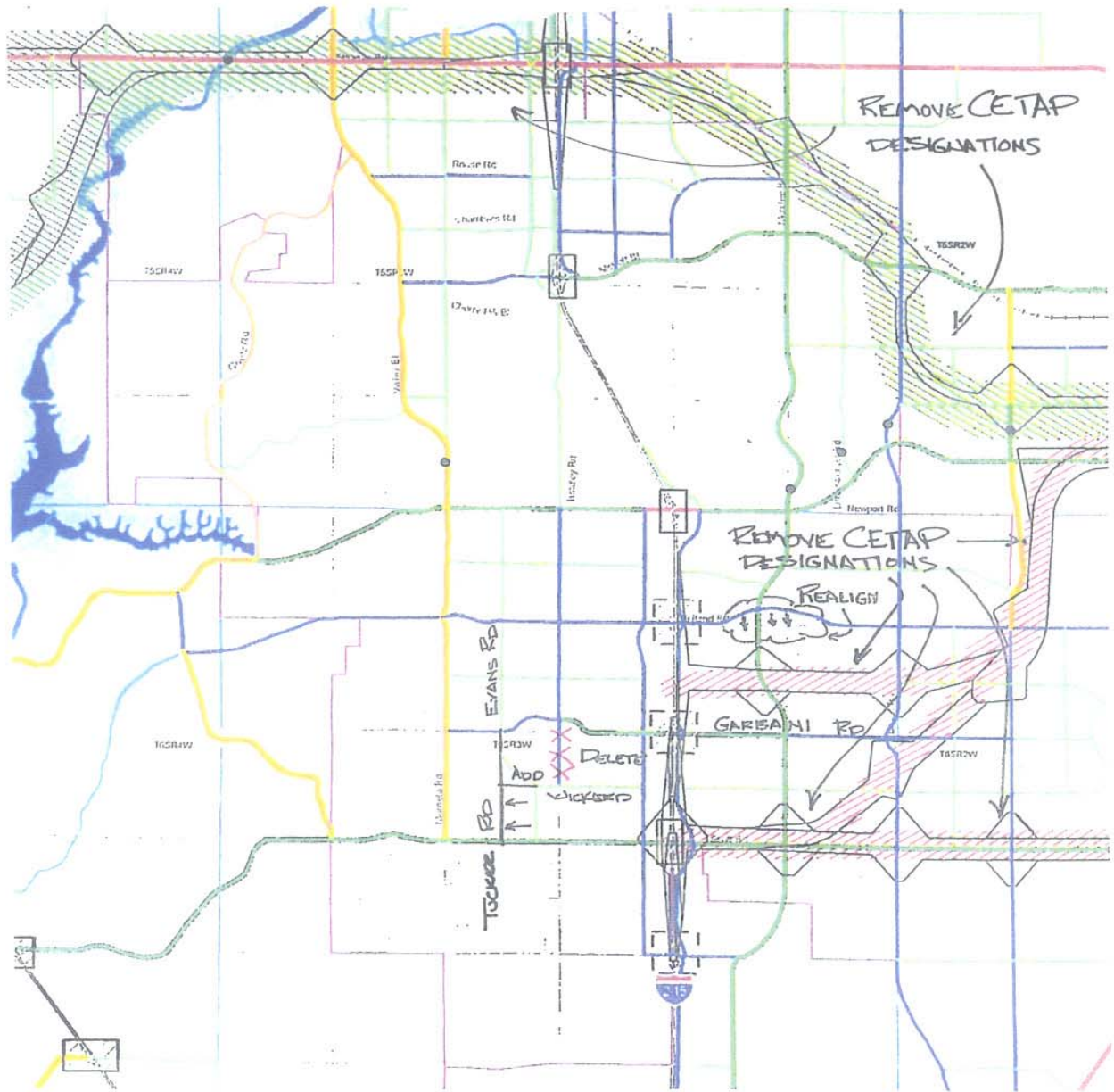


EXHIBIT L



- Expressway (184' ROW)
- Urban Arterial (152' ROW)
- Arterial (128' ROW)
- Major (118' ROW)
- Secondary (100' ROW)
- Collector (74' ROW)
- Mountain Arterial (110' ROW)
- Freeway
- Railroad
- Existing Interchanges
- Proposed Interchanges
- Beaumont/Banning to Temecula Corridor Alternatives
- Hemet to Corona/Lake Elsinore Corridor Alternatives
- General Corridor Limits for Discussion with County
- Possible Corridor Interchange Locations
- Bridges
- Water
- City
- Area Plan Boundary

Note: Circulation maps are a graphic representation identifying the general location and classification of existing and proposed thoroughfares in the county. Any questions regarding project location or improvement standards should be referred to the County Transportation Department.

Note: General Plan roadways within cities are shown for reference and to depict system continuity only. Any questions relative to improvement standards within city boundaries must be addressed to the respective city.

Source: Adapted from TransCore. The other line shows the map as of 1998.

Figure 6

