

Riverside County...creating a better place to live work and play

Project Background

Riverside County is at the epicenter of California's population explosion. From the rolling hills of Temecula to the palm tree-lined streets of the Coachella Valley, Riverside County offers a growing job base, newly built designer homes, great schools and proximity to employment and recreational opportunities in Los Angeles, Orange and San Diego counties. But the very growth that has made the Inland Empire economy larger than the economies of 25 other states also threatens the quality of life for the 1.5 million men, women and children who currently reside in Riverside County and find it an attractive place to live, work and play. As a result, Riverside County's leadership has embarked on an unprecedented, three-year planning effort to simultaneously prepare environmental, transportation, housing and development guidelines for the first half of the twenty-first century, based on population doubling in 2020. This integrated planning effort, to be completed in 2002, is the Riverside County Integrated Project (RCIP).

What is RCIP?

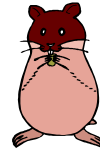
RCIP is a comprehensive, three-part, integrated program to determine future conservation, transportation and housing and economic development needs in Riverside County. This new and innovative project is the FIRST OF ITS KIND IN THE NATION. RCIP allows for planning that will ease the burden of so many people living in areas without adequate transportation. RCIP balances the housing, transportation, and economic needs of a large population with the existing environment and available natural resources. Such balance between competing interests is critical to well being of Riverside County residents. RCIP accommodates continued growth by integrating the Riverside County General Plan with transportation and environmental issues.

RCIP Guiding Principles

1. **Bottom- up Process:** the public actively participates in town hall meetings and project advisory groups.
2. **Project Elements working Together:** Habitat Conservation, Transportation, and Housing.
3. **Financing is Everybody's Responsibility:** ALL levels of society and government have a responsibility to ensure effective long-term planning for County.

"What we have learned is that you can't do these issues one species at a time."--Secretary of the Interior, Bruce Babbitt

Did you know...the Stephen's Kangaroo Rat species cost taxpayers \$42 million dollars in local funds to secure 41,000 acres for it's habitat?



MSHCP Background

RCIP will protect Riverside County's natural environment by conserving habitat and open space through a Multi-Species Habitat Conservation Plan (MSHCP). Why does the County need to be concerned about habitat? All too often, our natural environment is exposed to extraordinary stressful conditions and activities which can make valuable resources endangered and/or extinct. The MSHCP will provide open-space, protect watersheds and environmental needs of the County. In 1992, the California Natural Communities Conservation Planning Act was passed in order to promulgate a collaborative conservation planning effort between the public, businesses and government in order to address future region wide conservation needs while still feasible. Laws also exist which protect the rights of property owners and current land uses.

What is MSHCP?



The MSHCP is an element of RCIP to conserve open space, nature preserves and wildlife to be set aside in some areas. It is designed to protect over 150 species and conserve over 500,000 acres in Western Riverside County.

MSHCP Results

By supporting the MSHCP, the result will save taxpayers millions of dollars. Setting aside habitat acreage today, will enable us to efficiently plan for future houses, schools and parks, while simultaneously protecting our natural environment. Overall, it will:

- Streamline regulatory review related to endangered species
- Return local control to the County
- Conserve resources for future generations

Community, Environmental and Transportation Acceptability Process (CETAP)

Did you know... the Orange County Border on the 91 Freeway is expected to increase by 197% in 2020!

CETAP Background

RCIP will reduce traffic congestion by addressing future traffic and circulation issues through the Community & Environmental Transportation Acceptability Plan (CETAP).

Riverside County is home to some of the busiest transportation corridors in the nation. Traffic is expected to triple on existing freeways in western Riverside County, including the 91 and 215 freeways, as a result of population and employment growth in Riverside, Orange and Los Angeles counties.

RCIP's transportation program is more than just a plan, it is a multi-modal effort that considers not only highway options, but also looks at: mass transit; other forms of travel demand management infrastructure; planning including utilities and communication.

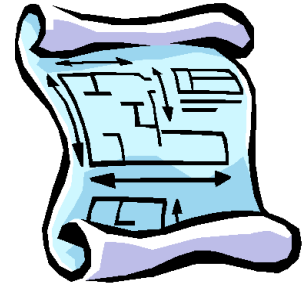
This element of RCIP will identify the locations for new transportation corridors that will help alleviate projected traffic congestion on the 91, 215 and 15 freeways. Most importantly, selection of these corridors will be completed around environmentally sensitive areas as identified in the MSHCP element of RCIP.

What is CETAP?

CETAP is the transportation element of RCIP. It will provide the blueprint for local transportation infrastructure and expenditures for the next 20 years. CETAP is integrated with habitat conservation requirements and will reflect future land-use decisions. Specifically, it focuses on Western Riverside County and will identify the locations for two new transportation corridors to be built during the next 5 to 10 years.

CETAP Results

- Corridors designed from ground up to assure compatibility with habitat and conservation efforts
- Clears corridors for right-of-way preservation and purchase
- An expenditure plan provides a blueprint for future initiatives



The Riverside County General Plan aims to make Riverside County a better place to live.

Did you know...Riverside County is nearly the size of Massachusetts, and has a population which would make it the 38th state and the Inland Empire economy is larger than 25 other states.

General Plan Background

The General Plan is one of the most important plans a body of government can prepare. It is the blueprint for the future. Every county has one. However, Riverside County is unique in its approach by integrating it with efforts to identify habitat and new transportation corridors. Riverside County has pioneered and championed new way of county planning.

What is the General Plan?

The General Plan is a very important document that is updated every 10 years to reflect the growing changes in a community. It is the blueprint for the future. It affects our quality of life---our neighborhoods, education, and the locations of our places of work. An update of the General Plan today will determine where homes, businesses and jobs will be located tomorrow. Currently, the General Plan is in the development stage. The development stage will refine the alternatives discussed in the technical study process by leadership, engineers, scientists and the public together. Issues that are expected to be refined are land use, air quality, biological resources, noise and transportation.

General Plan Results

The Riverside County General Plan will establish future land use, identify open space and conservation issues in coordination with projected housing and transportation needs.

By redesigning the General Plan for the County, the existing Community Plans are being converted to "Area Plans." Areas in the County that were not previously covered under the "Community Plans," are being incorporated into the new "Area Plan" design. There are 19 Areas Plans.

The purpose of the "Area Plans" are two-fold. The first purpose is to update maps identifying and displaying places where we circulate as a community, including: trails, bikeways, and noting significant environmental hazards. The second purpose is to guide policy for the development and conservation of the "Areas" and the communities within them.